

# Fitchburg Recreation Activity Guide



## SUMMER 2026

# ACTIVITY GUIDE

# CONTENTS

Recreation Dept Info.....	3
How to Register.....	4
General Program Info.....	5
Scholarships.....	6
Programs.....	7-17
Sneak Peak.....	18
Park Shelter Rentals.....	19
Community Center Rentals....	20
Summer Discount Tickets.....	21





The Fitchburg Recreation Department strives to provide quality recreation program opportunities for all Fitchburg Residents. The department has two full-time staff, various seasonal staff and program instructors, and countless volunteer coaches that provide recreation opportunities.

## RECREATION OFFICE

5510 LACY ROAD | 608-270-4285  
[www.FitchburgWI.gov/Recreation](http://www.FitchburgWI.gov/Recreation)

## HOURS

MON-THURS 8:00AM-4:00PM  
FRI 8:00AM-2:00PM

### HOLIDAY CLOSURES

MONDAY, MAY 25, 2026  
FRIDAY, JUNE 19, 2026  
FRIDAY, JULY 3, 2026

## STAFF

**CHAD SIGL**  
RECREATION MANAGER  
608-270-4286  
Chad.Sigl@FitchburgWI.gov

**EVELYN STENSENG**  
RECREATION COORDINATOR  
608-270-4284  
Evelyn.Stenseng@FitchburgWI.gov



**FIND US ON FACEBOOK**  
**@FITCHREC**

**REGISTER FOR CLASSES & ACTIVITIES AND MAKE RESERVATIONS:**  
[anc.apm.ActiveCommunities.com/Fitchburg](http://anc.apm.ActiveCommunities.com/Fitchburg)

OR

SCAN ME



We do our best to put out the most accurate and up-to-date Activity Guide possible. However, some program information may change after this guide is posted. Please check our website for the most up to date information.

# HOW TO REGISTER

## Online

Visit <https://anc.apm.activecommunities.com/fitchburg> to browse and register for activities. (Please Note: Online payments will be charged an online convenience fee)

## Mail-In

Mail your completed [registration form](#) (Español: [formulario de registro](#)) with payment to:  
Fitchburg Recreation Department  
5510 Lacy Road, Fitchburg WI 53711

## Walk-In

Registrations are accepted in person Monday - Thursday from 8:00am - 4:00pm & Friday 8:00am - 2:00pm at the Recreation Office located in the Community Center at 5510 Lacy Road.

## 24-Hour Drop Off

After normal business hours, the [registration form](#) (Español: [formulario de registro](#)) and payment may be placed in the drop box located inside the front door at City Hall (5520 Lacy Road).



**Enter Here**



**Drop Here**

# GENERAL PROGRAM INFO

## Resident/Non-Resident Fees

R - Resident      NR - Non-Resident  
A resident is anyone who lives at an address located within the City of Fitchburg. Addresses outside Fitchburg will be charged as a non-residents.

## Sign Up Now!

Don't wait until the last minute to register. If we don't have the minimum registration 5 business days before the start of a program it may be cancelled.

## Enrollment Confirmation

Once you have enrolled plan on attending all listed days and times. All online program registrations are accompanied by email receipts, however we cannot guarantee they will reach your inbox. Feel free to contact us to verify your registration or ask questions. We will contact participants if a program has been changed or cancelled.

## Program Transfers

As space allows, transfers from one class to another may be made before a class starts.

## Late Registrations

After a program has started we may be able to accept late registrations. Program fees will not be prorated if registering late.

## Program Cancellation/Refund Policy

Registration fees will be refunded when a program is cancelled by the Recreation Department. Single day cancelations due to weather or other unforeseen circumstances will be made up if possible.

Registration withdrawal requests made at least 5 business days before the program start date will have a \$5.00 administrative charge deducted.

Refunds/credits will not be issued if you withdraw out of a program less than 5 business days from the start date.

No refunds will be given once a program has started.

**Please note: online convenience fees are not refundable.**

## Inclement Weather

If a program needs to be cancelled due to weather the Rec Department will update the Cancellation Line (608) 270-4280, and our [Program Cancellation webpage](#). Generally updates occur at 4pm Mon-Thu, 2pm Fri, & 8am Sat - Sun.

## Photo Policy

Fitchburg Recreation reserves the right to utilize photos of participants for publicity purposes. Participants not wanting their photo used must notify the Department before the beginning of the program.

# SCHOLARSHIP PROGRAM

[Programa de Becas - Haga clic aquí para información en Español](#)

## 1. Purpose

The Fitchburg Recreation Department believes in providing services and programs to all who wish to participate, regardless of financial status.

## 2. Eligibility

Applicants must live within the Verona Area School District or City of Fitchburg.

Approved applicants will need to pay 25% of the program cost. The maximum funding per individual is \$50.00 per year. The maximum funding per household is \$150.00 per year. Eligibility will be determined on a case-by-case basis. Applicants will be notified by email or phone of their funding status. The application will be processed within two weeks. All financial aid forms will be kept confidential.

## 3. Verification

A current driver's license, utility bill, apartment lease or tax bill may verify residency of the applicant. A child's residency is determined by the address that is registered where they attend school.

## 4. Application

Eligible persons may apply by completing a [Scholarship Application Form](#) signed by an adult member of the household. All requests are confidential. Applicants need to submit a request form for each request. Applications will not be accepted for program registrations that have previously been processed.

Hardship cases will be reviewed and should be explained in writing on the request form. Hardship referrals may be accepted from the applicant, applicant's clergy, school staff, or other social service agencies.

Applications will be reviewed by the Recreation Manager or designee. All applications must allow two weeks (prior to program registration deadline) for processing.

## 5. Approval

The approval will be based on the availability of funds in the Scholarship Fund.

# SPRING PROGRAMS

## DANCE

FITCHBURG COMMUNITY CENTER

Pre-Ballet 1 (Ages 3 - 5) | \$88

4:30 - 4:55pm

Jazz (Ages 5 - 8) | \$96

5 - 5:30pm

Ballet 1 (Ages 5 - 8) | \$96

5:30 - 6pm

Hip Hop 1 (Ages 5 - 9) | \$96

6 - 6:30pm

Jazz Technique (Ages 8 - 12) | \$96

6:30 - 7pm

WED | MAR 18 - MAY 13 (NO CLASS 3/25)

Foundations  
DANCE



## CODING FOR KIDS

### THE SEQUEL

FITCHBURG COMMUNITY CENTER

Ages 9 - 15

Ready to level up your coding skills? In this follow-up class, students will work together to create their very own adventure-style video games! You'll get to design amazing worlds full of challenges, tricky puzzles, and creepy monsters to avoid. Use your imagination and creativity to bring your game to life. Get ready to code, create, and conquer!

THUR | APR 2 - MAY 7 (NO CLASS 4/9)

5:30 - 6:45PM | \$95

## SOCCER MINI SESSION

FITCHBURG COMMUNITY CENTER

Ages 4 & 5

The goal of this program is to teach kids basic skills and for them to gain an appreciation for the game. Parents are strongly encouraged to help throughout practice and games.

SUN | APR 12 - MAY 3 | \$35R/\$40NR

45MIN, SCHEDULED BETWEEN 2:30-5PM



Puentagon Educational  
Consulting

## BASKETBALL SHOOTING

### LEAGUE (COED)

STONER PRAIRIE SCHOOL

This 4-week program bridges the gap from community club basketball season to AAU basketball season. It's also a great kick start to a summer shooting program. The program is designed specifically to improve your shooting percentage.

TUES | APR 7 - 28 | \$80

GRADES 3 - 5 | 6:15 - 7:15PM

GRADES 6 - 9 | 7:15 - 8:15PM

## YEL! ROBOTICS:

### RESCUE 'BOTS

FITCHBURG COMMUNITY CENTER

Grades 1 - 5 (refers to 26/27 academic year)

There is a panda bear trapped in a ravine. Build a robot helicopter to rescue it! Students will also learn skills to create a floodgate, earthquake machine, or a helpful robot to better society. Learn coding and building to make a difference.

THUR | APR 9 - MAY 14 | 4:30 - 5:30PM



## SOCCER WITH

### SONIC SPORT CLUB

FITCHBURG COMMUNITY CENTER

Ages 4 & 5

This instructional program works to introduce participants to the sport of Soccer. A variety of drills/skills are practiced in each session including; dribbling, passing/receiving, and shooting.

SUN | APR 12 - MAY 3 | 4 - 5PM

\$60R/\$70NR



# SPRING PROGRAMS



## ZUMBA WITH MARISELA

FITCHBURG COMMUNITY CENTER

Ages 16+

Come join the fun! Get a great workout while dancing to a mixture of Latin & American rhythms. With energetic music and a variety of choreography, this group dance fitness class provides great cardio and toning exercise, but feels like a party!

TUES | 5 - 6PM | MAR 10 - MAY 5

NO CLASS 4/7

SUMMER DATES TBD

\$40 FOR SESSION OR \$7 DROP-IN

## ZUMBA WITH PAM

FITCHBURG COMMUNITY CENTER

Ages 16+

Come join the fun! Get a great workout while dancing to a mixture of Latin & American rhythms. With energetic music and a variety of choreography, this group dance fitness class provides great cardio and toning exercise, but feels like a party!

THUR | 4:45 - 5:45PM | MAR 5 - APR 9

NO CLASS 3/12

SUMMER DATES TBD

\$30 FOR SESSION OR \$7 DROP-IN

## YOGA FOR ALL LEVELS

FITCHBURG COMMUNITY CENTER

Ages 16+

Yoga practice is known to support a healthy body and mind, and in this multi-week slow-flow yoga series you will work on finding mobility, stability, and strength. By incorporating functional movement techniques, you can expect a whole body practice designed to find more ease and freedom your body.

TUES | 5:30 - 6:30PM

APR 14 - MAY 12

SUMMER DATES TBD

\$50 FOR SESSION OR \$15 DROP-IN



## PICKLEBALL

MORE INFO COMING SOON!



## Have an idea for a program?

Do you have an idea for a class or program you want to teach? Reach out - We are always looking for new fun programming!

# SUMMER CAMP

Ready to register? Click the class title!

## CAMP MCKEE ADVENTURE PLAYGROUND



### **MCKEE FARMS PARK - MAIN SHELTER**

Ages 4 - 7 | 9:15 - 11:45am

Children will have mornings filled with games, art, crafts, music, sports, and FUN!!!

#### **SESSION 1 | \$86R/\$96NR**

M - F | Jun 15 - 26 (NO camp 6/19)

#### **SESSION 2 | \$86R/\$96NR**

M - F | Jun 29 - Jul 10 (NO camp 7/3)

#### **SESSION 3 | \$95R/\$105NR**

M - F | Jul 13 - 24

#### **SESSION 4 | \$95R/\$105NR**

M - F | Jul 27 - Aug 7

**REGISTER FOR 3 OR MORE SESSIONS  
TO SAVE \$50**

**SALE**

Limited time offer!  
\$25 off registration fees for  
Camp McKee Adventure  
Playground  
&  
Half-Day Camps!

## HALF-DAY CAMP



### **MCKEE FARMS PARK - MAIN SHELTER**

Ages 6 - 11 | 1 - 4pm | \$90R/\$100NR

**REGISTER FOR 5 OR MORE SESSIONS TO  
SAVE \$50**

#### **SPORTZAPALOOZA!**

M - TH | JUN 15 - 18

This week is all about sports! Campers will have fun, be active, and even have a chance to embrace their silly side!



#### **STEM WEEK**

M - TH | JUN 22 - 25

This week is all about science! From experiments to games, kids will use their creativity and skills to solve problems and have fun!



#### **PIRATES, SHARKS, & MERMAIDS**

M - TH | JUN 29 - JUL 2

All aboard to explore the seven seas and what lies beneath the waves! Kids will get to laugh, play, and create as they hunt for treasure, make mermaid crafts, and so much more!



#### **BUILD IT!**

M - TH | JULY 6 - 9

From where we live to how we travel, mini to massive, and complex to simple, it is time to build IT!



# SUMMER CAMP

## HALF-DAY CAMP



### **MCKEE FARMS PARK - MAIN SHELTER**

Ages 6 - 11 | 1 - 4pm | \$90R/\$100NR

**REGISTER FOR 5 OR MORE SESSIONS TO  
SAVE \$75**

### WATER WORLD!

M - TH | JUL 13 - 16

Water, water everywhere! Kids will make a SPLASH this summer!



### MCKEE KIDS CARNIVAL & CIRCUS!

M - TH | JUL 20 - 23

Come one, come all for the McKee Kids Carnival & Circus! Kids will play carnival games, make popcorn art, and showcase their unique talents!



### SCOUTS, S'MORES, & MORE!

M - TH | JUL 27 - 30

Scouts will explore the outdoors, gain new skills, and campers will get a visit from special guests like Parks Crew!



### OUT OF THIS WORLD!

M - TH | AUG 3 - 6

3, 2, 1, BLAST OFF!!! This week is OUT OF THIS WORLD! It is all about stars, planets, and the rockets we use to get there!



## YOUTH ENRICHMENT LEAGUE (YEL!)

### FENCING CAMP

STONER PRAIRIE SCHOOL

Grades 2 - 12 (refers to 26/27 academic year)

New and returning students invited. Your favorite instructors return with more knowledge, refined coaching skills and, of course, your favorite fencing games and arm bands. Safety is our first priority. We supply safety swords, protective masks, chest plates and jackets, in a high-octane, inclusive environment.

MON-THU | JUN 15 - 18 | 9AM-12PM | \$150

### ROBOTICS: SCOUT 'BOTS

HOSTO HOCHI (NEW FACILITY ON TRACEWAY DRIVE)

Grades 1 - 5 (refers to 26/27 academic year)

Build and code space rovers to scout out Mars, the moon, and other extraterrestrial environments. Also, create a dragster and volcano alarm to learn basic computer programming while having fun! Let's go!

MON-THU | JUL 13 - 16 | 9AM-12PM | \$135

### PROJECT RUNWAY

STONER PRAIRIE SCHOOL

Grades 4 - 8 (refers to 26/27 academic year)

Sweet summer projects! A comfy shorts, a water bottle bag, criss-cross headband and more. No experience necessary. Students will make, showcase, and take home all their projects. Hand and machine sewing techniques are taught with SAFETY FIRST always in mind. The final day is a showcase where friends and family are invited to see the projects in action.

MON-THU | JUL 20 - 23 | 9AM-12PM | \$167



# SUMMER CAMP



## BRICKTOPIA MASTER BUILDERS CAMP

HOSTO HOCHI (NEW FACILITY ON TRACEWAY DRIVE)

Grades 1 - 5 (refers to 26/27 academic year)  
Are you up for a LEGO® Brick challenge? Do you have what it takes to be a Master Builder? If so, you are in the right place. We've saved our most challenging engineering projects (a robotic dog, motorized bug, race cars and more) for this camp. Battle summer brain drain.

MON-THU | JUL 27 - 30 | 9AM-12PM | \$135

## EXTREME ENGINEERS

HOSTO HOCHI (NEW FACILITY ON TRACEWAY DRIVE)

Grade Kindergarten (refers to 26/27 academic year)

LEGO® bricks are used to challenge every aspect of your child's creativity and intellect while learning the basics of engineering and physics. Each class students are given a different project to build, test and modify. Then they use these projects to investigate basic engineering concepts. Emphasis is placed on hands-on experiential activities and kid friendly lesson plans.

MON-THU|JUL 27 - 30 | 1 - 4PM | \$135



## DESTINATION MARS: ROCKETRY COURSE



HOSTO HOCHI (NEW FACILITY ON TRACEWAY DRIVE)

Grades 2 - 5 (refers to 26/27 academic year)  
Launch and watch your very own rocket speed 300 feet into the air! Then it is yours to take home! Students will make and take home multiple rockets of varying difficulty throughout this session. We will use these rockets and airplanes to investigate basic aeronautical concepts including: propulsion, thrust, lift, drag and more. We will also hypothesize about travel in outer space, how to get a United States astronaut to Mars and life on Mars.

MON-THU | AUG 3 - 6 | 9AM-12PM | \$167

## MAD SCIENTISTS TRAINING ACADEMY



STONER PRAIRIE SCHOOL

Grades 2 - 5 (refers to 26/27 academic year)  
In this class, you won't just learn science...you'll DO science. Make and take home a lava lamp, hover disc, explosive volcano, and...of course...SLIME! Use all of these experiments to explore and discover the scientific method. Don your white coat and goggles...it's time to begin your own journey to becoming a mad scientist (cue maniacal laugh)!

MON-THU | AUG 10 - 13 | 9AM-12PM | \$167



# YOUTH ENRICHMENT

## ART CART EXTRA!

MCKEE KIDS CROSSING SHELTER

Ages 3+

**FREE**

The Madison Museum of Contemporary Art's free Art Cart program brings expert instruction and a relaxed attitude to art projects tailored for children ages 3 and up.

Children should dress appropriately, as projects may involve water, paint, and other messy art materials. All children should be accompanied by an adult for the duration of the program.

Please pre-register so Art Cart can be prepared with enough materials for everyone! Drop-ins day of will still be allowed.

SAT | JUN 27 | 9AM - 12PM



## CODING FOR KIDS

FITCHBURG COMMUNITY CENTER

Ages 9 - 15

Instead of spending all of their time playing video games, UNLOCK YOUR CHILD'S POTENTIAL! Sign your kids up for a coding class and watch them thrive. Coding empowers young minds with problem-solving skills, creativity, and confidence. Prepare them for a bright future in tech and beyond.

TUE, WED, THUR | JUN 23 - 25 | 1 - 3PM | \$95



## BABYSITTER TRAINING

FITCHBURG COMMUNITY CENTER

Ages 10 - 14

This training will provide the safety skills and confidence necessary to be a great babysitter including basic child care and first aid. The training is provided in partnership with CPR Training Specialists, LLC, a licensed training partner with the American Red Cross. Please remember to bring a sack lunch.

THUR | JUN 18 | 9AM - 3PM | \$107

WED | AUG 12 | 9AM - 3PM | \$107

## CODING FOR KIDS

### THE SEQUEL

FITCHBURG COMMUNITY CENTER

Ages 9 - 15

Ready to take your coding to the next level? In this follow-up class to Coding for Kids offered in the spring or earlier this summer, students will collaborate to create their very own adventure games! You'll design exciting worlds filled with challenges, monsters, and puzzles.

TUE, WED, THUR | JUL 28 - 30 | 1 - 3PM | \$95



# YOUTH ENRICHMENT

## LITTLE MAKERS



HOSTO HOCHI (NEW FACILITY ON TRACEWAY DRIVE)

Ages 4 & 5

Big creativity for little builders! In this hands-on STEM day camp, young learners will design and build with LEGO® and K'NEX®, create ooey-gooey ocean slime, decorate delicious octopus cupcakes, and even build their own solar light to take home.

MON | JUN 29 | 9AM - 3PM | \$94



## JURASSIC FUN



FITCHBURG COMMUNITY CENTER

Ages 4 & 5

Dinosaurs come roaring back to life in this hands-on dino adventure! Little paleontologists will build and erupt their own volcano, create a dinosaur tooth model, and excavate fossils during an exciting dinosaur dig. Along the way, campers explore rocks, fossils, and prehistoric habitats while building observation skills and curiosity through play. It's the perfect mix of science discovery and messy, prehistoric fun designed just for little learners.

TUE | JUN 30 | 9AM - 3PM | \$94

## FORENSIC DETECTIVE



FITCHBURG COMMUNITY CENTER

Grades 4 - 7 (refers to 26/27 academic year)

Explore the science behind crime scene investigation in this hands-on STEM camp. Step inside the CSI lab and analyze fingerprints, test DNA, examine evidence, and use facial recognition technology to identify suspects. Campers will investigate a mock crime scene using real forensic techniques while discovering how biology, chemistry, and physics work together to solve cases.

WED | JUL 1 | 9AM - 3PM | \$94

## JR. VET MEDICINE



HOSTO HOCHI (NEW FACILITY ON TRACEWAY DRIVE)

Grades 1 - 3 (refers to 26/27 academic year)

Calling all future veterinarians! In this hands-on animal science day camp, we'll explore how pets' bodies work by creating anatomy models like an edible heart and candy spine. We'll learn how to perform a basic pet exam and assemble pet first aid kits to take home.

TUE | AUG 18 | 9AM - 3PM | \$94



# YOUTH ENRICHMENT



## JR. PALEONTOLOGIST



FITCHBURG COMMUNITY CENTER

Grades 1 - 3 (refers to 26/27 academic year)

Step into the role of a real paleontologist in this geology-powered science day camp! We'll classify and build a rock collection, investigate how crystals form and crack open a geode, conduct a fossil excavation, and engineer a volcanic eruption while learning the earth science behind it. Along the way, we practice observation, classification, and scientific reasoning as we explore how fossils and rock layers help scientists understand Earth's history.

WED | AUG 19 | 9AM - 3PM | \$94



## DRONE PILOTING



FITCHBURG COMMUNITY CENTER

Grades 7 - 9 (refers to 26/27 academic year)

Take to the skies in this high-tech STEM camp! We'll learn the fundamentals of safe drone piloting, including responsible flight practices, precision takeoff and landing, and controlled navigation. We'll design and build an obstacle course, then program our drones to complete mission-based challenges. Along the way, we'll explore aerodynamics, robotics, and coding while discovering real-world applications like search and rescue.

THUR | AUG 20 | 9AM - 3PM | \$94

## State Trail Passes

Annual passes are available for purchase, in-person, at the Recreation Office (5510 Lacy Road).  
\$25 (cash/check only)



# YOUTH SPORTS

## BASEBALL

### BASEBALL (T-BALL) COED

GAMES AT MCKEE FARMS PARK

PRACTICE LOCATIONS VARY

Ages 4 & 5

Every player will bat every inning and experience each fielding position during the season. Players will receive a T-shirt and a baseball cap.

JUN 9 - END OF JUL | TUE & THUR EVENINGS  
START TIMES VARY BETWEEN 5:30 & 6:15PM

\$40R/\$50NR



### BASEBALL (COACH PITCH) COED

GAMES AT MCKEE FARMS PARK

PRACTICE LOCATIONS VARY

Ages 6 - 8

Players will continue to work on the fundamentals of the game while being introduced to some more advanced baseball skills. Players will receive a T-shirt and a baseball cap.

JUN 8 - END OF JUL | MON & WED EVENINGS  
START TIMES VARY BETWEEN 5:30 & 6:30PM

\$40R/\$50NR

### BASEBALL (MACHINE PITCH)

MCGAW PARK + TRAVELING

Ages 8 - 10

Teams will practice/play games twice a week (Tuesdays & Thursdays) League play will be against local communities (Verona, Mt Horeb, Belleville & New Glarus) playing both home and away games.

Players will receive a T-shirt and a baseball cap. Baseball pants can be purchased separately. Players should have their own glove.

LATE MAY - MID JUL | TUE & THUR EVENINGS

\$50R/\$60NR



## MADISON RADICALS

## ULTIMATE FRISBEE

## CAMP

FIREMAN'S PARK IN VERONA

Ages 8 - 14

Join the fun and learn from the best! The Madison Radicals Ultimate Frisbee Camp is your chance to sharpen your skills with coaching from Radicals players, one of the top professional ultimate teams in the country. Perfect for players of all skill levels, this camp focuses on fundamentals, teamwork, and having a blast. Plus, every participant receives their very own frisbee to take home! Don't miss out on this exciting opportunity to elevate your game and meet the pros.

MON - FRI | JUL 13 - 17 | 9AM - 12PM | \$155



# YOUTH SPORTS



## FLAG FOOTBALL

MCGAW PARK

Grades K - 2 | 9-9:45AM | \$30R/\$35NR

Grades 3 & 4 | 9:45-10:30AM | \$30R/\$35NR

Grades 5 & 6 | 10:30-11:15AM | \$30R/\$35NR

This is not an organized league. There will be football skill instruction for the first part of each day, then we will play a game. New teams picked each week & FUN is the goal.  
FRI | JUN 26 - AUG 7 (NO CLASS 7/3)

## FALL NFL

## FLAG FOOTBALL

VARIOUS LOCATIONS

Grades K & 1 | \$60R/\$70NR

Grade 2 | \$60R/\$70NR

Grade 3 | \$60R/\$70NR

Grade 4 | \$80R/\$90NR

Grade 5 | \$80R/\$90NR

Grade 6 | \$80R/\$90NR

Grades 7 & 8 | \$80R/\$90NR

Join the excitement of NFL Flag Football. Participants will receive an official NFL reversible jersey and flag belt. The program is coed and grade refers to the 26/27 school year. For full details please see program listings.

MID AUG - OCT



## SOCCER WITH SONIC SPORT CLUB

MCGAW PARK - SOCCER FIELDS NEXT TO PICKLEBALL COURTS

SUN | JUNE 7 - 28 | 4 - 5PM

AGES 6 - 8

In partnership with Sonic Sport Club, this instructional program works to introduce participants to the sport of Soccer, otherwise known as "The Beautiful Game". Participants will learn the sport of soccer by training and playing, developing the fundamental skills along the way. A variety of drills/skills are practiced in each training session including; dribbling (ball control), passing/receiving, and shooting.



## VOLLEYBALL

**MORE INFO  
COMING SOON!**



**Did you know we offer  
scholarships?**

Our scholarships help families cover  
the cost of rec programs!

*Learn more on page 6*

# YOUTH SPORTS

## TENNIS

### SESSION 1

MCKEE TENNIS COURTS  
MON & WED | JUNE 15 - JULY 8

This is a youth instructional tennis program designed for all abilities. Instructors are skilled college and high school tennis players. Tennis balls will be provided, however participants need to bring their own racquet. Participants should also bring a filled water bottle each day of class. Tennis shoes must be worn, no sandals or flip-flops.

AGES 4 & 5 | 8:30 - 9:15AM | \$46R/\$56NR  
AGES 6 & 7 | 9:30 - 10:15AM | \$46R/\$56NR  
AGES 8 & 9 | 10:30 - 11:30AM | \$50R/\$60NR  
AGES 10 - 12 | 1 - 2PM | \$50R/\$60NR  
AGES 13 - 16 | 2:15 - 3:15PM | \$50R/\$60NR



### SESSION 2

MCKEE TENNIS COURTS  
MON & WED | JULY 13 - AUGUST 5

This is a youth instructional tennis program designed for all abilities. Instructors are skilled college and high school tennis players. Tennis balls will be provided, however participants need to bring their own racquet. Participants should also bring a filled water bottle each day of class. Tennis shoes must be worn, no sandals or flip-flops.

AGES 4 & 5 | 8:30 - 9:15AM | \$46R/\$56NR  
AGES 6 & 7 | 9:30 - 10:15AM | \$46R/\$56NR  
AGES 8 & 9 | 10:30 - 11:30AM | \$50R/\$60NR  
AGES 10 - 12 | 1 - 2PM | \$50R/\$60NR  
AGES 13 - 16 | 2:15 - 3:15PM | \$50R/\$60NR



## TEAM TENNIS MATCH PLAY

MCKEE TENNIS COURTS + TRAVEL  
AGES 11 - 16 | \$70R/\$80NR

This Players will be instructed on stroke development, court etiquette, and game strategy. You do not need previous experience playing matches. Players will be paired with others of similar skill level during match play against other local communities. Please see program listing for full details.

JUN 17 - JUL 31 | NO PROGRAM JUL 3  
WED PRACTICES = 3:30-4:30PM  
FRI (IF NO MATCH) = 10:00 AM -11:00 AM  
FRI (MATCHES) = 10:00 AM -12:00 PM  
END OF SEASON TOURNAMENT JUL 31 TIME IS TBA.

**Program full?  
Register for the  
waitlist!**

Whenever possible we will add those on the waitlist to a program.

# KEEP AN EYE OUT FOR...



## Youth Government Camp

Aug. 24-27, 2026 | 9am-3pm

**SAVE THE DATE**



**Monday, Aug. 24**  
Public Works  
2373 S. Fish Hatchery Rd



**Tuesday, Aug. 25**  
City Hall  
5520 Lacy Rd



**Wednesday, Aug. 26**  
Fire and EMS  
2950 S. Syene Rd



**Thursday, Aug. 27**  
Police Department, Building  
Inspection & Construction  
with JP Cullen  
5520 Lacy Rd

**IMPORTANT**

- Participants must be 11-14 years old
- Must have transportation to and from each location.
- Sign up is for all four days.

*Due to limited space and growing interest, Youth Government Camp is reserved for first-time attendees. We appreciate our returning families and look forward to future opportunities together.*

Registration Coming Soon!  
Questions? Email [HR@fitchburgwi.gov](mailto:HR@fitchburgwi.gov)

## SUMMER DISCOUNT TICKETS

Discounted tickets for attractions like Noah's Ark, MKE Zoo, & more!

See details on page 21 or visit: [fitchburgwi.gov/599/Recreation](http://fitchburgwi.gov/599/Recreation)

## MOVIES IN THE PARK



More information coming soon!

# PICKLEBALL & TENNIS COURT RENTALS



Reserve or view court schedules here:

Pickleball

[fitchburgwi.gov/2769/Pickleball](http://fitchburgwi.gov/2769/Pickleball)



Tennis

[fitchburgwi.gov/2952/Tennis](http://fitchburgwi.gov/2952/Tennis)



# PARK SHELTER RENTALS



## Park Shelter Rentals Reserve today!

Visit link below for complete info.

[www.fitchburgwi.gov/1860/Rent-a-Park-Facility](http://www.fitchburgwi.gov/1860/Rent-a-Park-Facility)

### PARKS

McGaw  
Tower Hill  
Southdale  
Greenfield  
Swan Creek  
Stoner Prairie  
McKee Farms  
Huegel-Jamestown



**GRADUATIONS - BIRTHDAYS - REUNIONS - ETC.**

# COMMUNITY CENTER RENTALS

The Fitchburg Community Center is a building designed to provide facilities for meetings, classes, receptions, parties, social/cultural activities, etc. Rentals are open to the public on a first come, first served basis. Reservations can be made up to 90 days in advance of the rental date, no earlier.

For complete info and pricing visit [www.fitchburgwi.gov/178/Community-Center](http://www.fitchburgwi.gov/178/Community-Center)

## Main Level Rooms

Rentable Hours:

Mon-Thurs: 8am-9pm | Fri: 8am-10pm | Sat: Noon-10pm | **No Sunday Rentals.**



Oak Hall

Max Capacity: 250

Food & drink allowed



Prairie View

Max Capacity: 40

NO food/drink allowed



Fitchburg

Max Capacity: 60

NO food/drink allowed

## Lower Level Rooms

Rentable Hours:

Mon-Thurs: 4:30-9pm | Fri: 2:30-10pm | Sat: Noon-10pm | **No Sunday Rentals.**



Stoner Prairie Dining

Max Capacity: 80

Food & drink allowed



Swan Creek

Max Capacity: 40

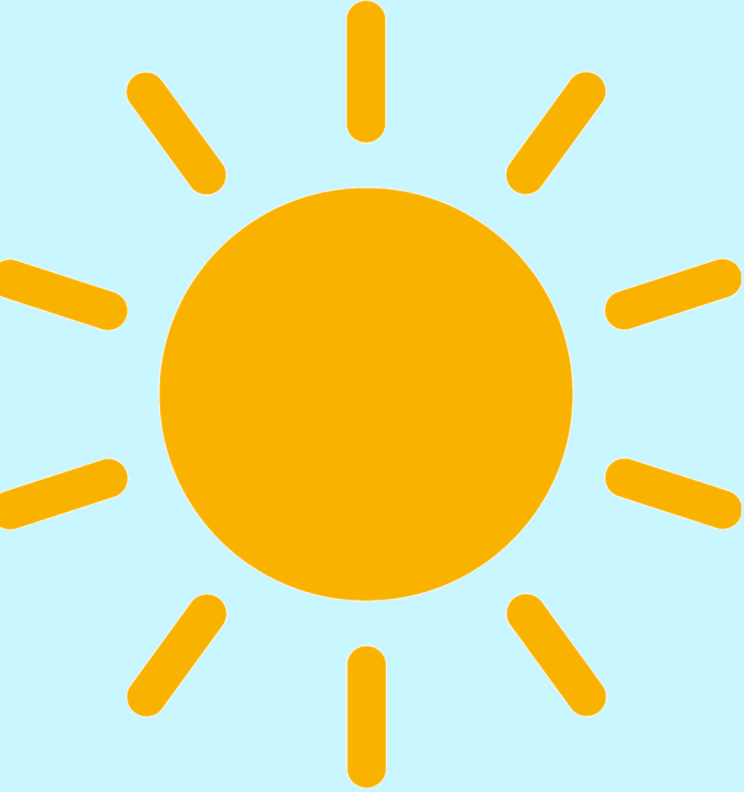
Food & drink allowed



Syene

Max Capacity: 20

NO food/drink allowed



# Summer Discount Tickets

## NOAH'S ARK

OPEN MAY 23 - SEPT 7

ALL TICKETS \$38

CHILDREN <36" TALL - FREE!

## MT. OLYMPUS

OPEN MAY 22 - SEPT 7

ALL TICKETS \$18

AGES 2 & UNDER - FREE!

## MKE COUNTY ZOO

TICKETS EXPIRE 12/31/26

ADULT (AGES 13+) \$16

CHILD (AGES 3-12) \$13

AGES 2 & UNDER - FREE!

## LAND OF NATURA

OPEN MAY-SEPTEMBER

ALL TICKETS \$20

AGES 3 & UNDER - FREE!

Sale May - mid Aug, while supplies last

5510 Lacy Road, Fitchburg WI

Sale Hours M-TH: 8am - 3:45pm & F: 8am - 1:45pm

Cash/check only, NO REFUNDS!

More info - [www.fitchburgwi.gov/recreation](http://www.fitchburgwi.gov/recreation)

