

# Fitchburg Fire Department NEWSLETTER



## FASTEST GROWING CITY IN WISCONSIN:

Municipal growth and economic development (along with a recent town/city attachment) have impacted Fitchburg's population. According to the Milwaukee Journal Sentinel, we are the fastest growing municipality in Wisconsin:



**What are Wisconsin's fastest-growing cities in 2023?**

Here are Wisconsin's fastest-growing municipalities with greater than 30,000 residents between 2020 and 2023, according to estimates from the Wisconsin Department of Administration:

- **Fitchburg:** (Dane County), Grew 9.74%, from 30,999 in 2020 to 34,019 in 2023
- **Sun Prairie:** (Dane County), Grew 6.73% from 35,967 in 2020 to 38,387 in 2023
- **Oak Creek:** (Milwaukee County), Grew 4.59% from 36,497 in 2020 to 38,174 in 2023
- **Madison:** (Dane County), Grew 4.4% from 274,686 in 2020 to 286,785 in 2023
- **Eau Claire:** (Eau Claire County), Grew 2.71% from 69,421 in 2020 to 71,304 in 2023
- **Menomonee Falls:** (Waukesha County), Grew 2.69% from 38,527 in 2020 to 39,565 in 2023



## CHIEF'S MESSAGE

Community growth impacts municipal services in a variety of ways. It shouldn't be too surprising to see the effect population and development have on service demand within the fire department. Although we knew that our call volume was going to go up this year, we have already surpassed our projected numbers (and the year isn't over).

The fire department continues to look for methods to responsibly provide emergency service in a growing community. We strive to reduce redundancy and we work diligently to identify the risks that present with population growth (and population density). Meanwhile, we maintain emergency response to the rural and agricultural communities in Fitchburg (our department experiences a broad range of community exposure and risk).

Staffing a suburban fire department can be tricky. Our workforce is shifting and recruitment for part-time firefighters is trending downward. Increases in career staff have not been realized at the same rate of population growth. The impact of decades of reliance on part-time firefighters is being realized now.

Staffing plans have been developed and Fire/EMS service delivery models have been proposed. Our excitement for community growth is directly proportional to our responsibility to provide effective emergency services.

I am always open for a discussion about the future of emergency services in the City of Fitchburg. Please contact my office for a meeting.



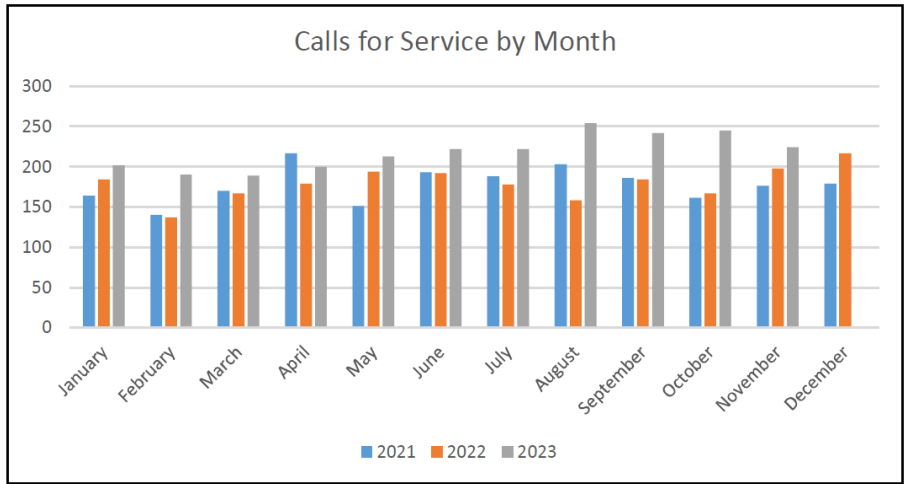
**Newsletter Editor:**  
If you have questions or suggestions about content, please contact:  
**Kim Miller**  
**Admin. Services Manager**  
kim.miller@fitchburgwi.gov  
608-270-7042

**Contact Us:**  
fire@fitchburgwi.gov  
**Fire Station #1:**  
608-270-7070  
**Fire Station #2:**  
608-270-7050  
**Fire Station #3:**  
608-270-7060

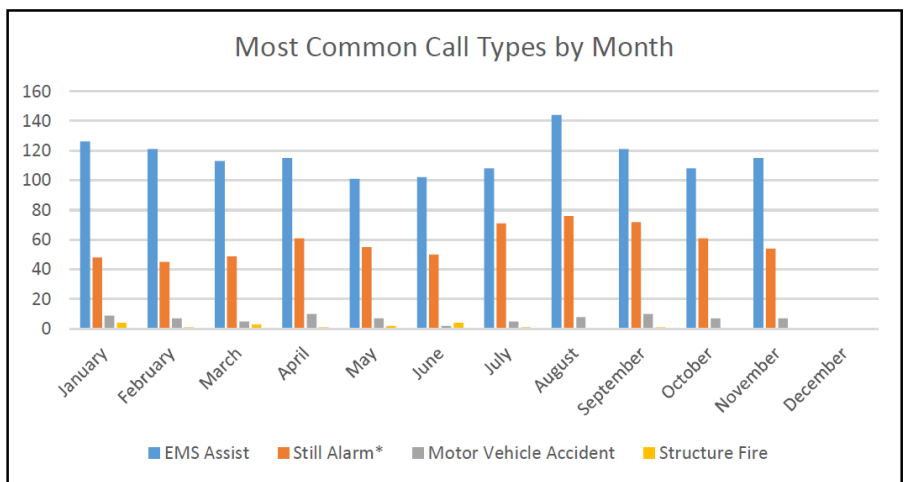
# NOVEMBER 2023 OPERATIONS



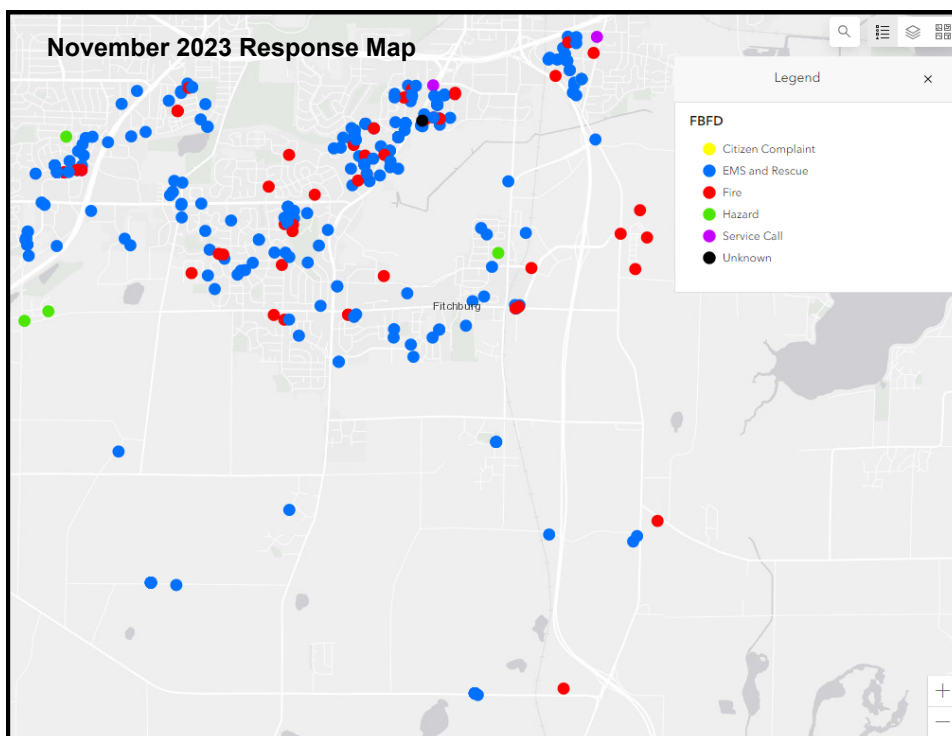
Calls for Service by Month				
Month	2021	2022	2023	Change
January	164	184	202	10%
February	140	137	190	39%
March	170	167	189	13%
April	217	179	200	12%
May	151	194	213	10%
June	193	192	222	16%
July	188	178	222	25%
August	203	158	254	61%
September	186	184	242	32%
October	161	167	245	47%
November	176	198	224	13%
December	179	217		
Total	2128	2155	2403	127%
Projection			2323	



Most Common Call Types by Month				
Month	EMS Assist	Still Alarm*	Motor Vehicle Accident	Structure Fire
January	126	48	9	4
February	121	45	7	1
March	113	49	5	3
April	115	61	10	1
May	101	55	7	2
June	102	50	2	4
July	108	71	5	1
August	144	76	8	0
September	121	72	10	1
October	108	61	7	0
November	115	54	7	0
December				



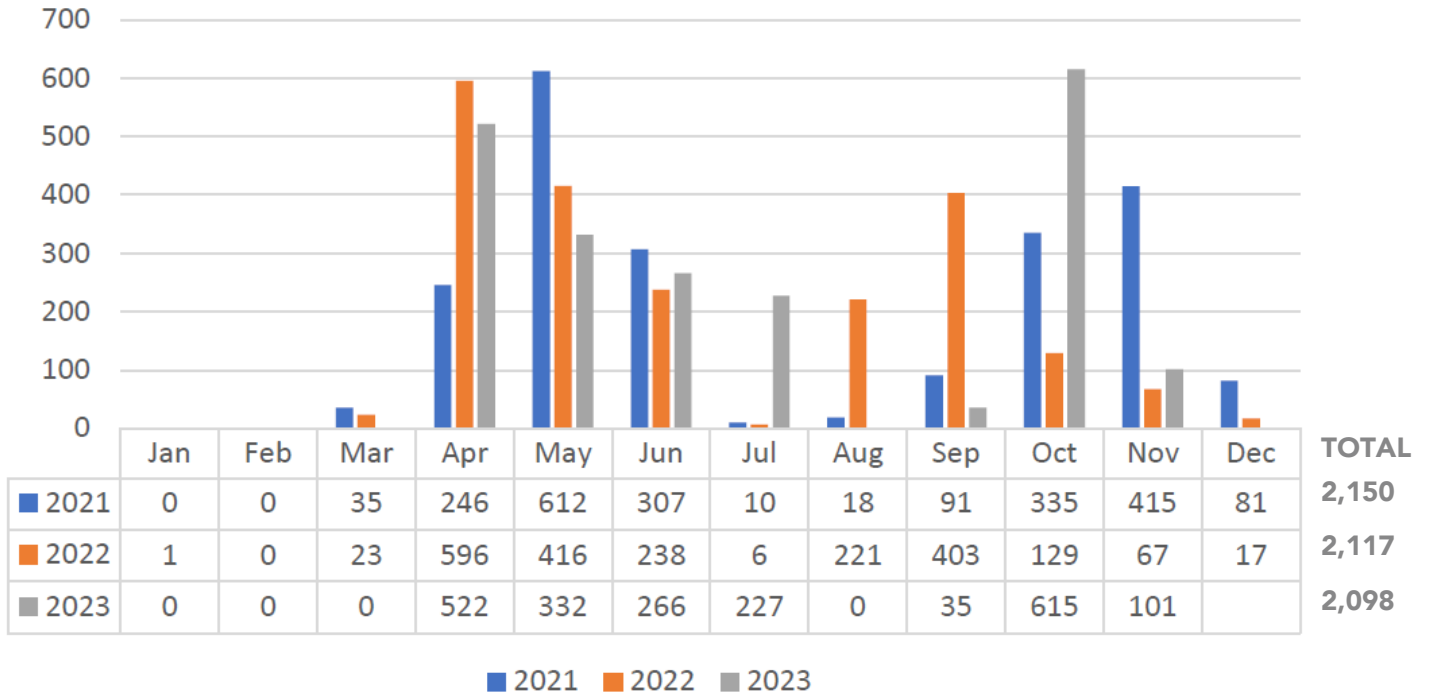
\*Still Alarms include: Alarm Sounding, Car Fires, Odor Investigations



# PREVENTION AND INSPECTION



**INSPECTIONS COMPLETED BY MONTH:**



**2,098**  
INSPECTIONS

**48**  
CORRECTED  
VIOLATIONS

**138**  
RE-INSPECTIONS

**COMMUNITY RISK REDUCTION:**

The Fitchburg Fire Department is working to establish a community risk reduction (CRR) program that can take what we already know about emergency response and fire prevention to intentionally focus knowledge and activities in an effort to lower risk within our jurisdiction.

Fire departments are uniquely positioned to know their communities better than most other organizations. Firefighters and emergency medical responders see firsthand (through medical calls, inspections, or simply driving through the community) how people live and the needs they have.

More to follow in 2024...

# PREVENTION AND INSPECTION



## HOLIDAY/ SEASONAL SAFETY:

Christmas trees account for hundreds of fires each year. Typically, shorts in electrical lights or open flames from candles, lighters, or matches start tree fires. Keep your Christmas tree watered! It is the easiest way to ensure your holidays are safe and Merry!

Here are a few additional tips to help keep your home and family safe from fires during the holiday season!

Put a **FREEZE** on Winter Holiday Fires


**Did you know?**  **More than 1/3** of home decoration fires are started by candles.

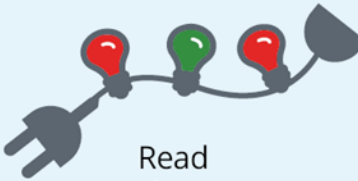
**As you deck the halls this season, be fire smart.**  Keep candles at least **12 inches** away from anything that burns.


 Think about using **battery-operated** flameless candles.




  

Put a **FREEZE** on Winter Holiday Fires

**Did you know?**  More than **1 in every 5** Christmas tree fires were caused by a heat source too close to the tree.

**As you deck the halls this season, be fire smart.**  Read manufacturer's instructions for the number of light strands to connect.

 Make sure your tree is **at least 3 feet away** from heat sources like fireplaces, radiators and space heaters.

# NOVEMBER 2023

# STAFFING REPORT



## STAFFING AS OF DECEMBER 1, 2023

	Authorized Headcount	Current Number of Members	Light Duty / On Leave	TOTAL	+/- Headcount
<b>Career Staff</b>	<b>18</b>			<b>19</b>	
Chiefs	4	4	0	4	0
Lieutenants	3	3	0	3	0
Firefighters	10	11	0	11	1
Support Staff	1	1	0	1	0
<b>Part-Time Staff</b>	<b>66</b>			<b>42</b>	
Chiefs	2	2	0	2	0
Lieutenants	3	0	0	0	-3
Firefighters	45	26	1	27	-18
Intern Staff	6	6	0	6	0
Support Staff	10	7	0	7	-3
<b>Total</b>	<b>84</b>	<b>60</b>	<b>1</b>	<b>61</b>	<b>-23</b>

## FIRE DEPARTMENT STAFFING DEMOGRAPHICS

	M/F	Black	Hispanic	Asian	Two or More
<b>Career Staff</b>					
Chiefs	4 / 0	0	0	0	0
Lieutenants	3 / 0	0	0	0	0
Firefighters	11 / 0	0	2	0	0
Support Staff	0 / 1	0	1	0	0
<b>Part-Time Staff</b>					
Chiefs	2 / 0	0	0	0	0
Lieutenants	0 / 0	0	0	0	0
Firefighters	22 / 4	0	0	0	1
Intern Staff	5 / 1	1	0	0	0
Support Staff	6 / 1	0	0	1	0
<b>Total</b>	<b>53 / 7</b>	<b>1</b>	<b>3</b>	<b>1</b>	<b>1</b>

### PERSONNEL NOTES

- Leave of Absence: Stewart

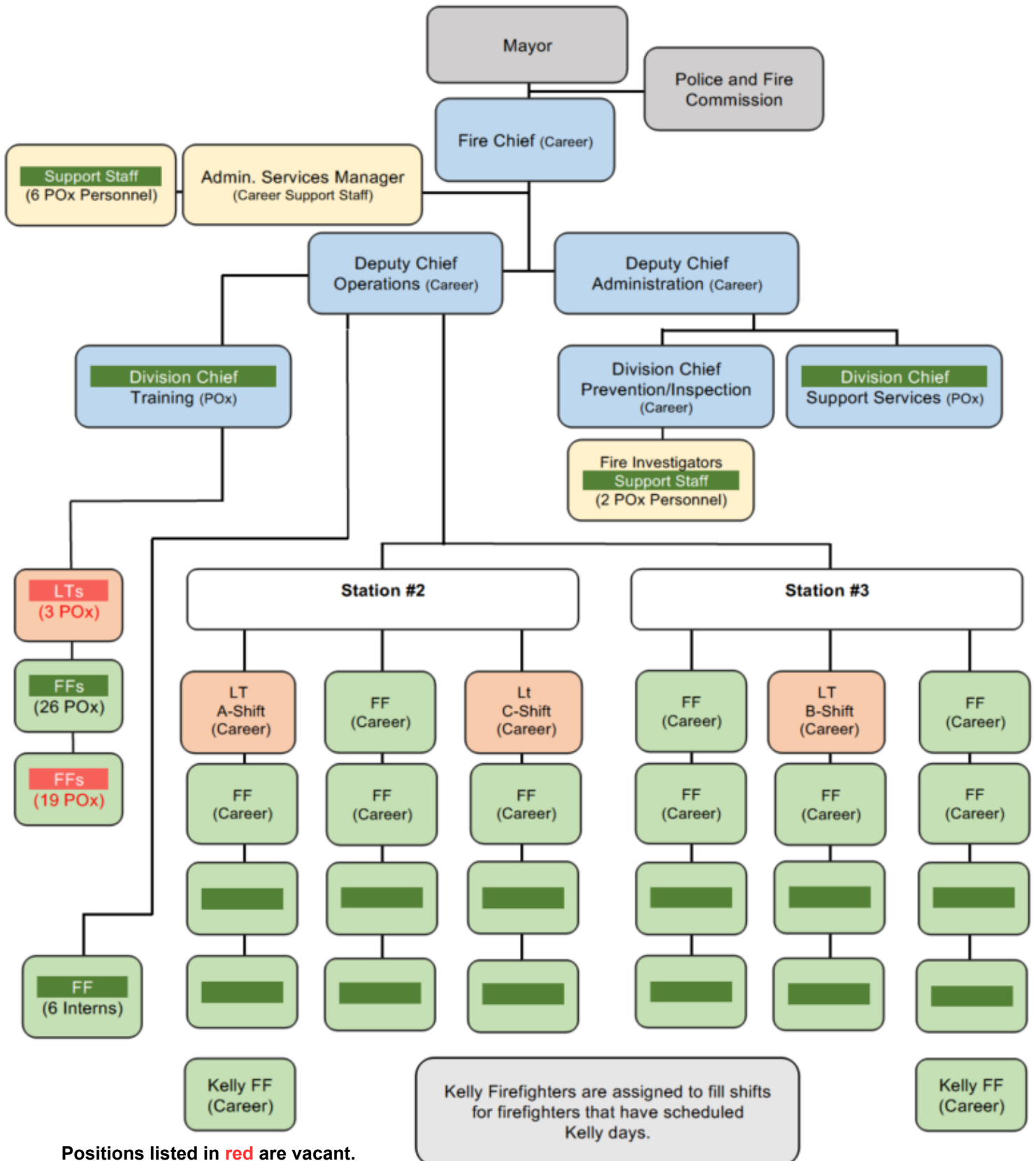
### RECRUITMENT

- No new recruitment

### PROMOTIONS

- No new promotions

# ORG CHART



# OVERTIME BREAKDOWN



### OPEN SHIFTS TAKEN VOLUNTARILY BY CAREER

Month	# of 10 hour shifts	# of 14 hour shifts	# of 24 hour shifts	Total # of shifts
Jan	22	4	4	30
Feb	37	1	8	46
Mar	34	3	3	40
Apr	44	1	5	50
May	41	17	29	87
Jun	37	6	27	70
Jul	27	6	34	67
Aug	23	5	17	45
Sep	39	6	13	58
Oct	20	6	6	32
Nov	38	4	8	50
Dec				

### PAID ON CALL FIREFIGHTER OVERTIME

Month	Overtime Hours
Jan	282.5
Feb	581.75
Mar	199
Apr	530
May	422.25
Jun	508.75
Jul	434.25
Aug	407.75
Sep	271.5
Oct	334.25
Nov	279
Dec	

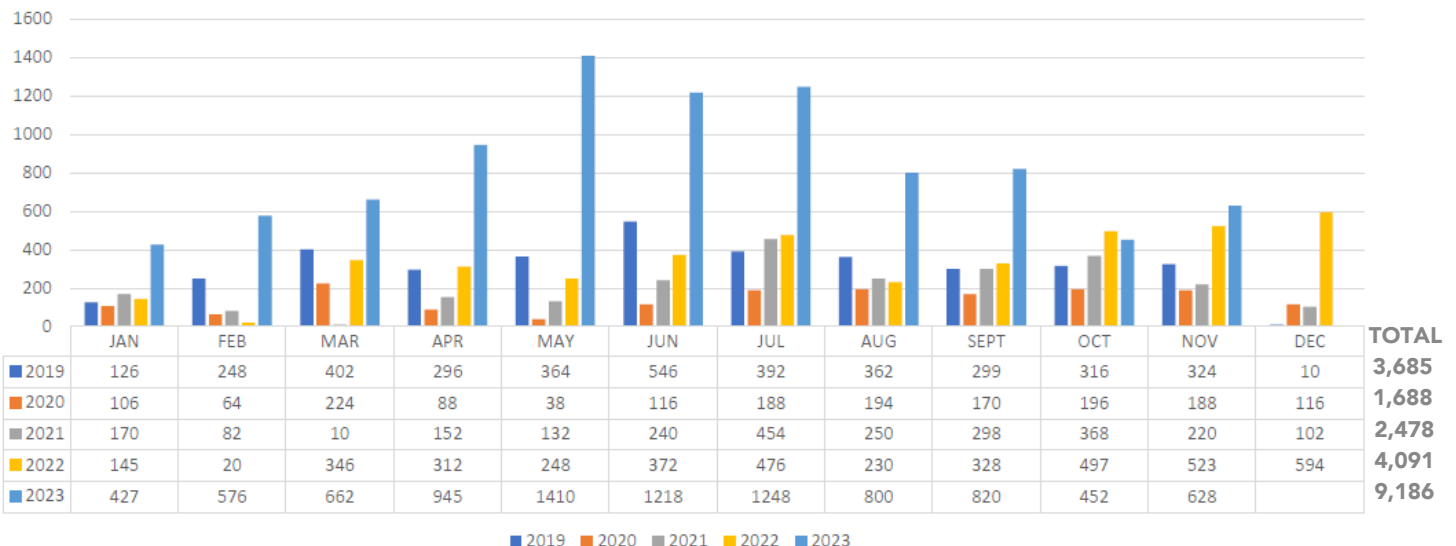
### VOLUNTEER SHIFTS VS MANDATED SHIFTS FOR CAREER

Month	# of Voluntary Shifts	# of Mandated Shifts	Total # of shifts
Jan	23	2	25
Feb	45	0	45
Mar	40	3	43
Apr	50	8	58
May	87	3	90
Jun	70	6	76
Jul	67	6	73
Aug	45	6	51
Sep	58	2	60
Oct	32	1	33
Nov	50	0	50
Dec			

### CAREER FIREFIGHTER OVERTIME (HOURS)

Month	Voluntary Hours	Mandated Hours	Total Hours
Jan	393	34	427
Feb	576	0	576
Mar	632	30	662
Apr	814	131	945
May	1358	52	1410
Jun	1102	116	1218
Jul	1170	78	1248
Aug	708	92	800
Sep	786	34	820
Oct	428	24	452
Nov	628	0	628
Dec			

### OVERTIME, BY MONTH AND YEAR



# DECEMBER 2023 PERSONNEL



## **BIRTHDAYS IN DECEMBER:**



**David Zuehlke,  
December 9**



**Mark Mlekush,  
December 26**



**Brandon Reiter,  
December 26**



**Hans Schwoerer,  
December 30**

## **ANNIVERSARIES IN DECEMBER:**



**Kim Miller,  
December 27 (2 years)**



**Jesus Villagomez,  
December 18 (6 years)**



**Andrew Eastman,  
December 3 (10 years)**



**AJ Miller,  
December 3 (10 years)**



**Robert Kunze,  
December 3 (21 years)**



**Scott Westphal,  
December 3 (21 years)**



## **FIRE DEPARTMENT RECOGNITION:**

Our department was recognized by the Society of St. Vincent de Paul for the assistance our firefighters provided to Lacy Garden. Lacy Garden is a 1.25 acre lot that was donated by the Lacy Family. Produce harvested from this site serves the Society of St. Vincent de Paul food pantry. Community volunteers (neighbors helping neighbors) provided the labor - and the garden provided tens of thousands of pounds of ethnic and culturally friendly produce.

2023 was a tough year (because of drought conditions). Garden staff worked with the Fitchburg Parks Director to identify the garden as a community garden. With that designation, the Fitchburg Fire Department was able to support their growing season with water delivery (so that water could be stored on-site in portable tanks).

Together, we were able to salvage the growing season and serve several families in the Madison area with healthy, locally grown produce. It was our pleasure to help St. Vincent de Paul help others!



## **BERBEE DERBY, THANKSGIVING DAY:**

Fitchburg Fire Rescue, Police Department, Fitch-Rona EMS, and Verona Fire Department provided public safety standby for over 6000 runners/walkers at the 20th year of the Berbee Derby this morning.



# OTHER ITEMS



## FUTUREQUEST, CAREER DAY:

Our firefighters had attended this years FutureQuest event. FutureQuest is an event where companies from all 16 career cluster pathways to over 5,000 middle school students from Dane County. The FutureQuest exposition involved hands-on activities that allowed students to explore career and academic opportunities to become Future Ready.

