






TRAFFIC CONTROL LEGEND

-  TYPE III BARRICADE WITH ATTACHED SIGN
-  TYPE III BARRICADE WITH NO SIGN
-  SIGN ON PERMANENT SUPPORT
-  PORTABLE CHANGEABLE MESSAGE BOARD
-  WORK ZONE

GENERAL NOTES

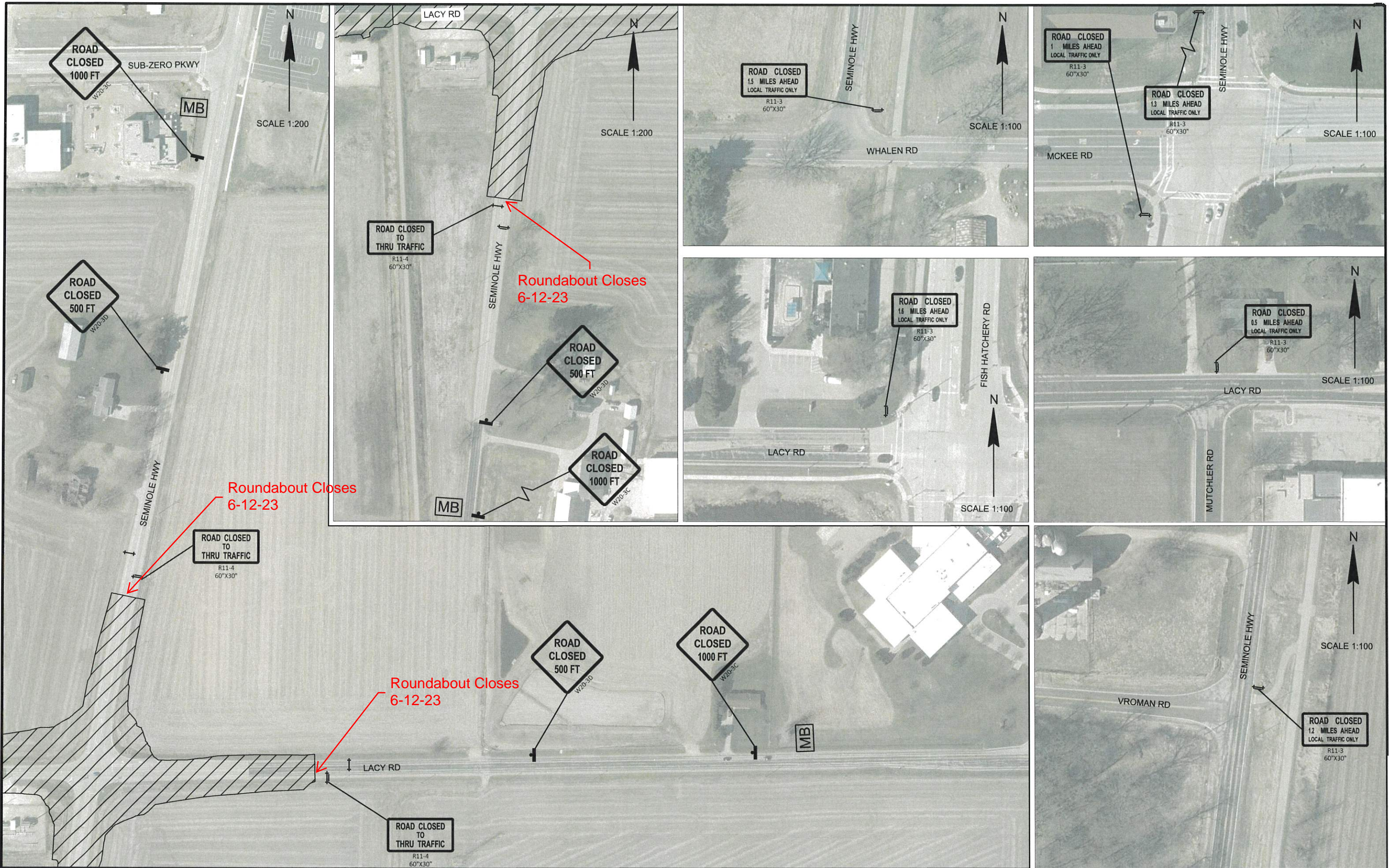
- ANY SIGNS, TEMPORARY OR EXISTING, WHICH CONFLICT WITH TRAFFIC CONTROL "IN USE" SHALL BE REMOVED OR COVERED AS NEEDED AND AS APPROVED BY THE ENGINEER. REMOVING/REPLACING OR COVERING/UNCOVERING SIGNS WILL BE INCIDENTAL TO OTHER TRAFFIC CONTROL ITEMS.
- ALL TRAFFIC CONTROL SIGNS SHALL BE 36" X 36" UNLESS OTHERWISE NOTED.
- "WO" SIGNS ARE THE SAME AS "W" SIGNS EXCEPT THE BACKGROUND IS REFLECTIVE ORANGE.
- CONSIDER GEOMETRICS WHEN LOCATING SIGNS, ARROW BOARDS AND SIGN MESSAGE BOARDS.
- IF SIGNS ARE IN PLACE LESS THAN 7 CONTINUOUS DAYS AND NIGHTS, THE ADVANCED WARNING SIGNS MAY BE MOUNTED ON PORTABLE SUPPORTS WITH A MINIMUM 5' MOUNTING HEIGHT.
- ALL TRAFFIC CONTROL SIGNING SHALL CONFORM TO: PART VI OF THE MANUAL ON UNIFORM TRAFFIC CONTROL DEVICES, WISCONSIN MANUAL OF UNIFORM TRAFFIC CONTROL DEVICES, TRAFFIC ENGINEERING, OPERATIONS AND SAFETY MANUAL, AND OTHER CONTRACT DOCUMENTS..

- REFER TO THE TRAFFIC CONTROL DETAILS, AS WELL AS THE FOLLOWING WISDOT STANDARD DETAIL DRAWINGS FOR TRAFFIC CONTROL DEVICES AS NECESSARY, UNLESS OTHERWISE DIRECTED BY THE ENGINEER:

- BARRICADES AND SIGNS FOR MAINLINE, DETOUR, ON RAMP CLOSURES AND ADVANCED WIDTH RESTRICTIONS, SHEETS A & B
- BARRICADES AND SIGNS FOR SIDEROAD CLOSURES
- CHANNELIZING DEVICES, SHEET B
- TRAFFIC CONTROL, WORK ON SHOULDER OR PARKING LANE, UNDIVIDED ROADWAY

MAINTENANCE OF TRAFFIC

- LACY RD WILL BE CLOSED TO THRU TRAFFIC FROM FITCHRONA RD TO THE SEMINOLE HWY INTERSECTION.
- LACY RD TRAFFIC WILL BE DETOURED AS SHOWN IN THE LACY RD DETOUR PLANS.
- DURING LACY RD & SEMINOLE HWY INTERSECTION SEMINOLE HWY WILL BE CLOSED AT THE INTERSECTION WITH LACY RD.
- SEMINOLE HWY TRAFFIC WILL BE DETOURED AS SHOWN IN THE SEMINOLE HWY DETOUR PLAN.
- COMMERCE PARK DRIVE WILL BE CLOSED TO TRAFFIC AT SUB-ZERO PKWY.
- LOCAL BUSINESS, QUARRY, AND RESIDENTIAL ACCESS SHALL BE MAINTAINED AT ALL TIMES.
- BADGER STATE TRAIL TO REMAIN OPEN FOR USE AT ALL TIMES.





PROJECT: LACY RD

CLIENT: PROMEGA CORP.

COUNTY: DANE

TRAFFIC CONTROL: LACY RD CLOSED & SEMINOLE HWY OPEN

SHEET

CONSTRUCTION

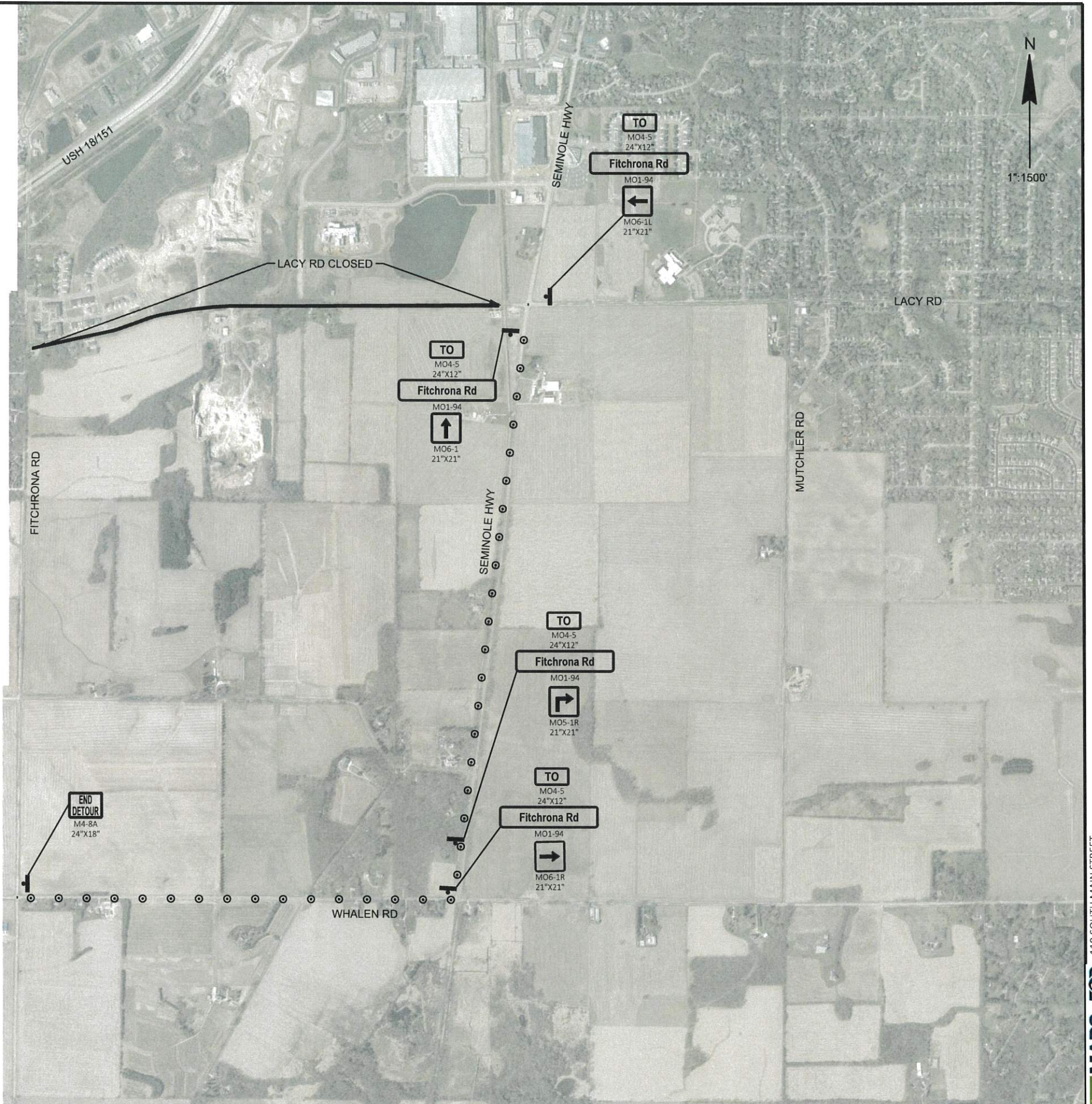
- DETOUR IN PLACE WHILE LACY RD IS UNDER CONSTRUCTION AND LACY RD AND SEMINOLE HWY INTERSECTION IS OPEN TO TRAFFIC.

TRAFFIC OPERATIONS

- LACY RD CLOSED TO THRU TRAFFIC FROM FITCHRONA RD AT SEMINOLE HWY INTERSECTION.
- WESTBOUND TRAFFIC TO FITCHRONA RD DIRECTED SOUTH ON SEMINOLE HWY, WEST ON WHALEN RD TO FITCHRONA RD.

DETOUR LEGEND

- ⏏ TYPE III BARRICADE WITH ATTACHED SIGN
- ⏏ SIGN ON PERMANENT SUPPORT
- ⏏ SIGN ON EXISTING SUPPORT
- ⊙ ⊙ DETOUR ROUTE



CONSTRUCTION

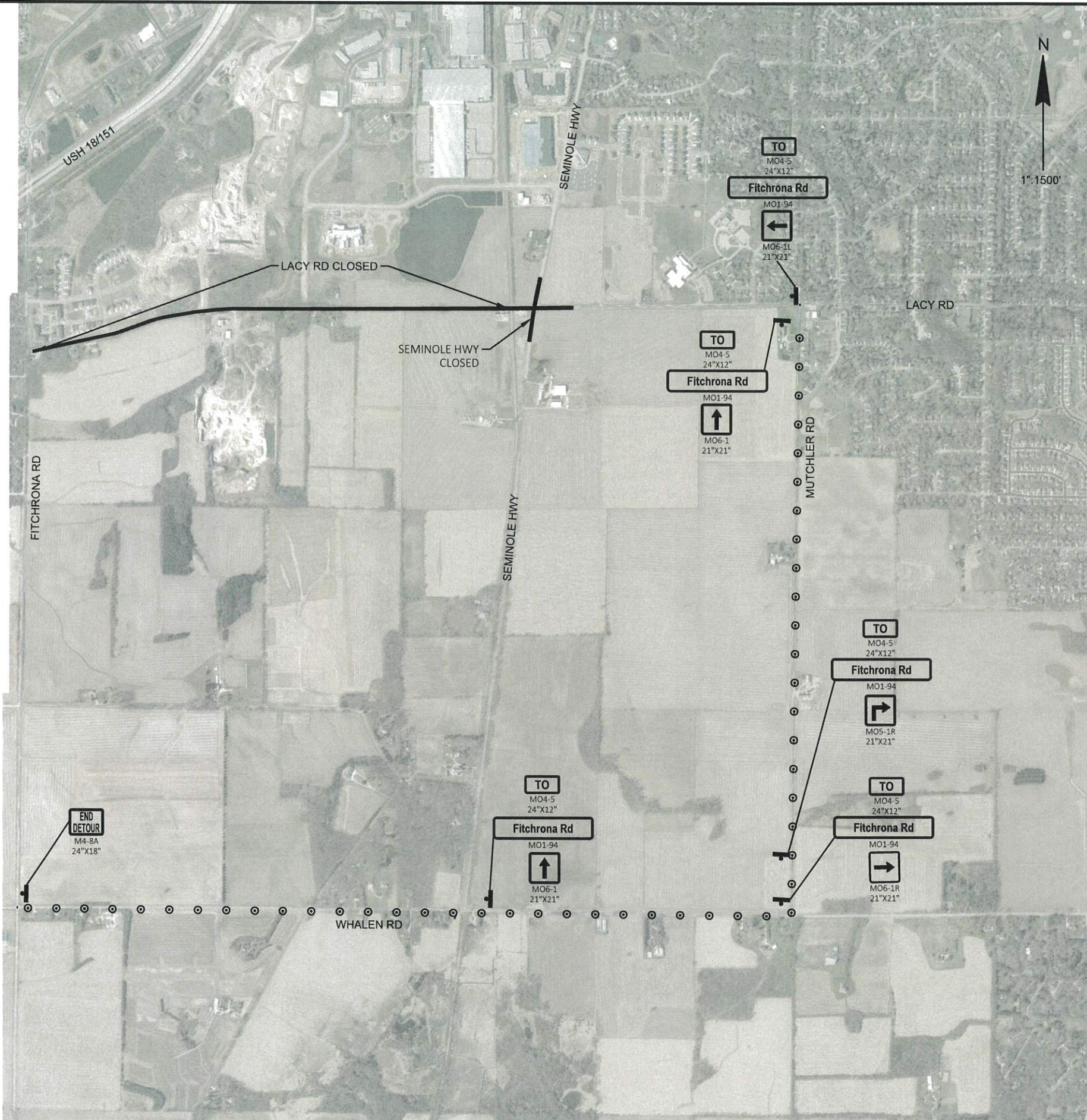
- DETOUR IN PLACE WHILE LACY RD IS UNDER CONSTRUCTION AND LACY RD AND SEMINOLE HWY INTERSECTION IS CLOSED TO TRAFFIC.

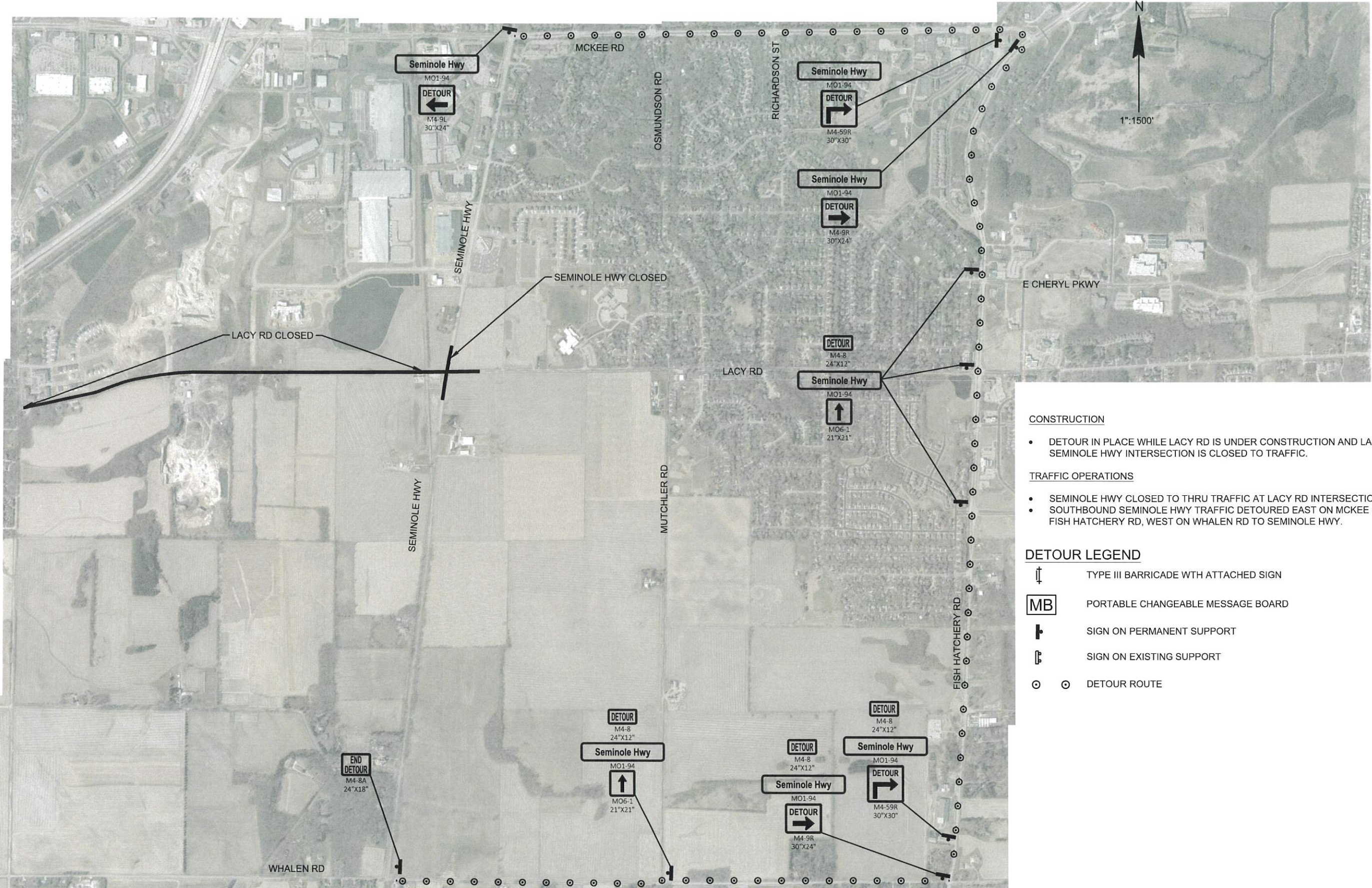
TRAFFIC OPERATIONS

- LACY RD CLOSED TO THRU TRAFFIC FROM FITCHRONA RD TO 0.25 MI EAST OF SEMINOLE HWY.
- WESTBOUND TRAFFIC TO FITCHRONA RD DIRECTED SOUTH ON MUTCHLER RD, WEST ON WHALEN RD TO FITCHRONA RD.

DETOUR LEGEND

- ⇄ TYPE III BARRICADE WITH ATTACHED SIGN
- ⊣ SIGN ON PERMANENT SUPPORT
- ⊢ SIGN ON EXISTING SUPPORT
- ○ DETOUR ROUTE





CONSTRUCTION

- DETOUR IN PLACE WHILE LACY RD IS UNDER CONSTRUCTION AND LACY RD AND SEMINOLE HWY INTERSECTION IS CLOSED TO TRAFFIC.

TRAFFIC OPERATIONS

- SEMINOLE HWY CLOSED TO THRU TRAFFIC AT LACY RD INTERSECTION.
- SOUTHBOUND SEMINOLE HWY TRAFFIC DETOURED EAST ON MCKEE RD, SOUTH ON S FISH HATCHERY RD, WEST ON WHALEN RD TO SEMINOLE HWY.

DETOUR LEGEND

- ⏏ TYPE III BARRICADE WTH ATTACHED SIGN
- MB PORTABLE CHANGEABLE MESSAGE BOARD
- ⏏ SIGN ON PERMANENT SUPPORT
- ⏏ SIGN ON EXISTING SUPPORT
- ⊙ ⊙ DETOUR ROUTE

TRAFFIC CONTROL ACCESS LEGEND

- Hammersley Quarry
- ##### Yahara Materials

NOTE:
1. MAINTAIN ACCESS THROUGHOUT CONSTRUCTION AS SHOWN AND IN THE CONTRACT SPECIAL PROVISIONS.



PROJECT: LACY RD	CLIENT: PROMEGA CORP.	COUNTY: DANE	TRAFFIC CONTROL: ACCESS DETAILS	SHEET
------------------	-----------------------	--------------	---------------------------------	-------