

## **FISH HATCHERY ROAD CONSTRUCTION UPDATE**

Forward this email to family, friends and co-workers who travel this area and encourage them to [sign up](#) for Project email updates! *STAY INFORMED*: Fish Hatchery Road [Project website](#) and connect through [Facebook](#), [Twitter](#) and [YouTube](#).

### **Weekly Construction Update: October 20 – October 29**

Access is open to area businesses and neighborhoods in the project area. Please continue to patronize our local businesses

**Overall Project Summary:** Reconstruct FHR from Traceway Drive south to Brendan Avenue

- ~~Stage Pro-E (Temporary Accommodations): Through April 12<sup>th</sup>~~
- ~~Stage E (Reconstruct NB lanes, Traffic pushed west & occupy existing SB lanes): April 13<sup>th</sup> – June 28<sup>th</sup>~~
- **Stage F (Reconstruct SB lanes, Traffic moved east & onto new NB lanes): June 28<sup>th</sup> – End of October**
- Stage G (Medians, Daily closures with traffic split & using permanent lanes): End of October – 11/12/21

#### **Traffic Alerts:**

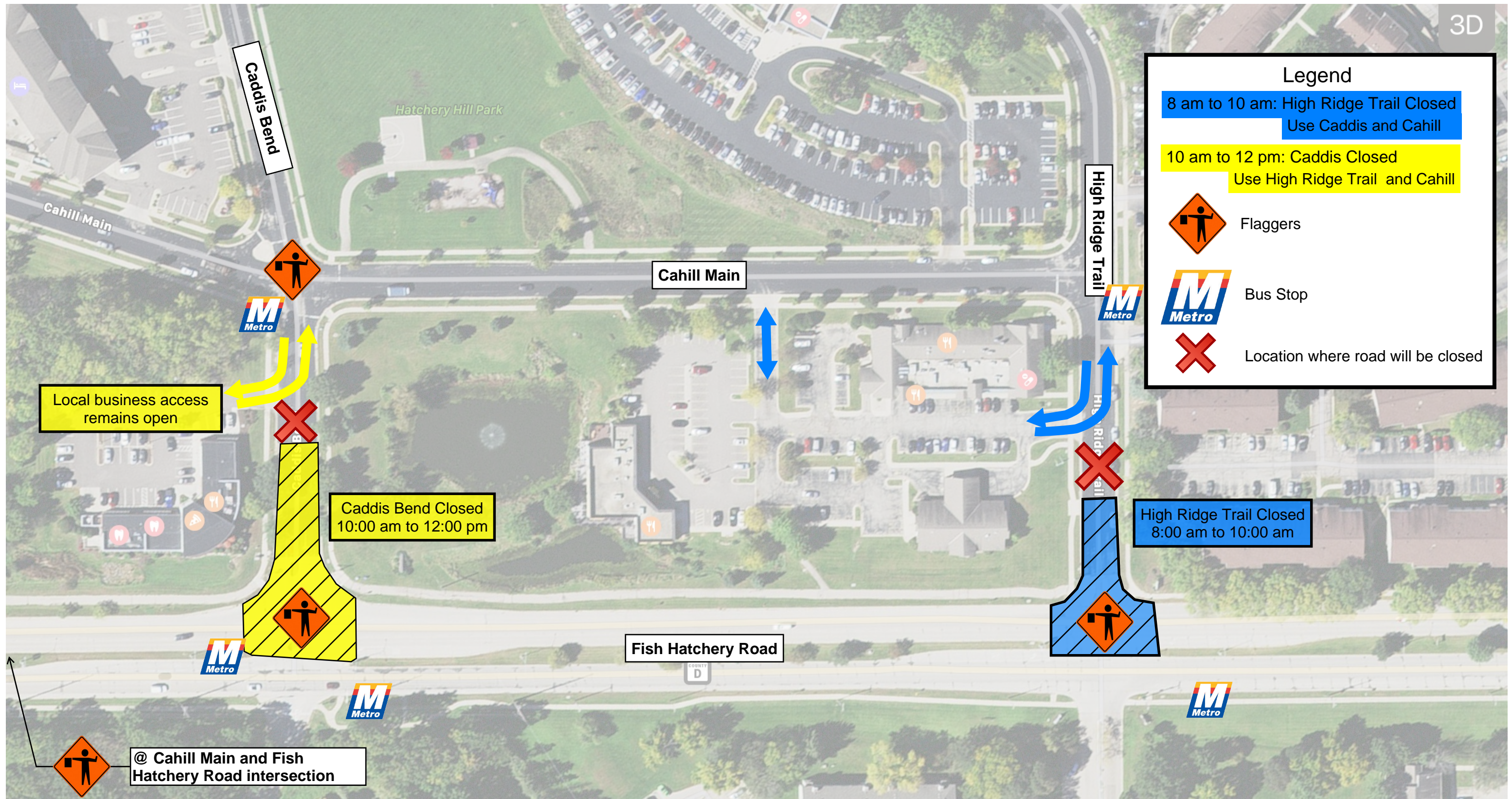
- This Week:
  - Thursday, 10/21
    - Close HR from 8 - 10am
    - Close Caddis from 10am – 12pm
    - Cahill will be restricted after the lunch hour for an hour while paving through the intersection
  - Friday, 10/22
    - Close Cahill 8am – 12pm
    - Caddis to remain open & built in halves
- Week of 10/25
  - Monday, 10/25: Stage G Traffic Switch
    - 9am – 12 pm, from Traceway to South Limits
    - NB traffic remains as is
    - SB traffic switched over to permanent lanes and remains restricted to a single lane
    - New WB McKee bus stop available (Tues, 10/26)
  - Wednesday, 10/27 – Monday, 11/5:
    - Daily lane closures, from Beltline to Traceway
    - M-F from 9am – 3pm
- Week of 11/1
  - Greenway Cross: 3 day closure, west of FHR (with dates not yet finalized)
    - Road to be closed between Eggiman and Beltline Frontage Road
    - 9am – 3pm
  - FHR: Daily lane closures from Beltline to Traceway continue
- Week of 11/8
  - Miscellaneous lane restrictions ahead of substantial completion (Friday, 11/12)

#### **Plan Ahead: Three-week construction outlook**

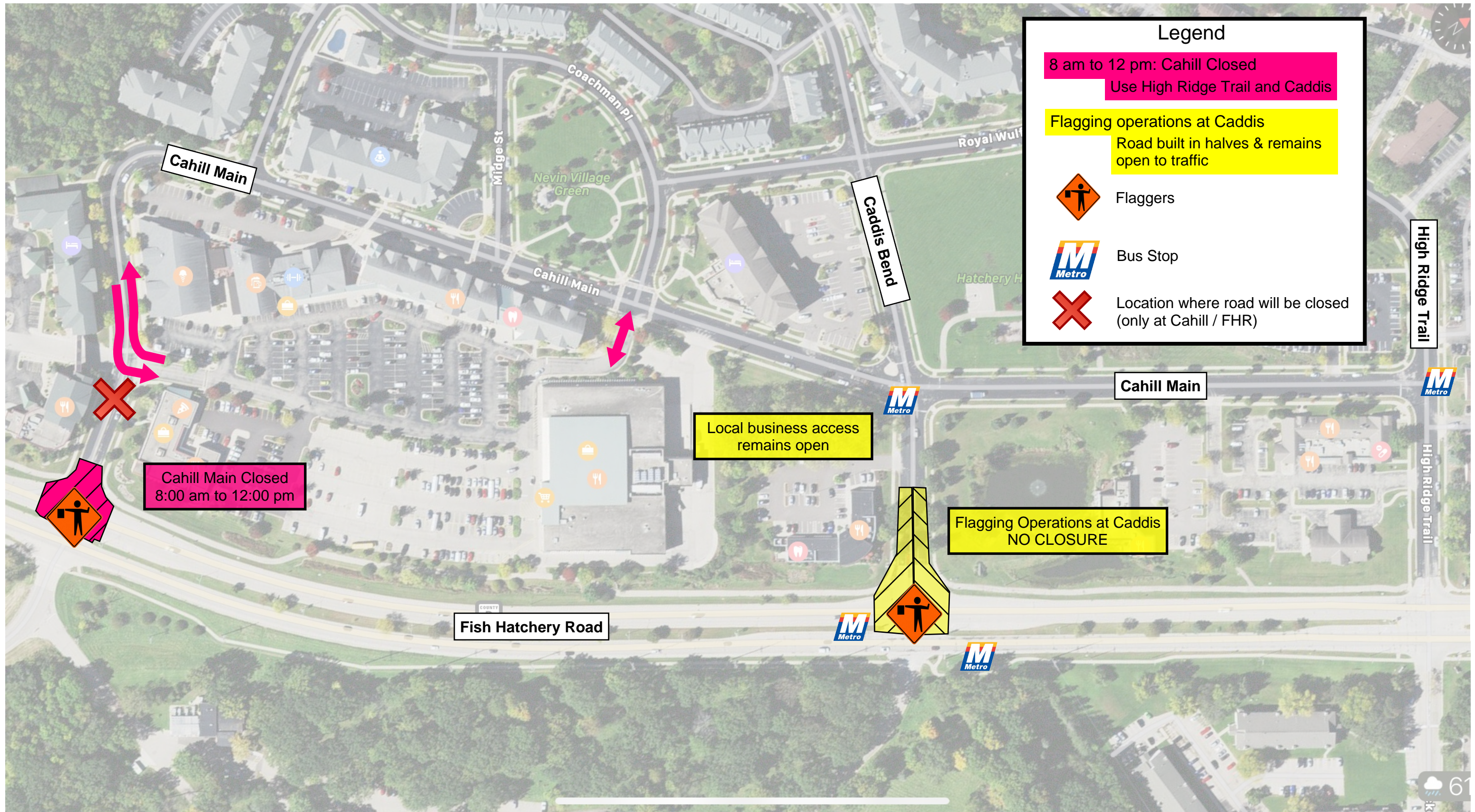
- Week of 10/18
  - Pull electrical wire, turn on permanent traffic signals at McKee & Caddis
  - Finish topsoil & restore outside/west side of SB
  - Pave surface HMA (Thursday & Friday)
  - Permanent Pavement Marking (Friday & Saturday)
  - R-13-355 & Ped Path Railing
  - MGE meters at McKee & Caddis
- Week of 10/25
  - Stage G traffic switch Monday
  - Finish medians (removals, concrete, streetscaping), punchlist
- Week of 11/1
  - Close SB bus lane north of Traceway (street lights, punch list)
  - Streetscaping median (2<sup>nd</sup> week)
  - NB median lanes to remain closed (south of Traceway)
    - Pave remaining HMA
    - Complete streetscaping



# Thursday, October 21



# Friday, October 22



## Legend

8 am to 12 pm: Cahill Closed  
Use High Ridge Trail and Caddis

Flagging operations at Caddis  
Road built in halves & remains open to traffic



Flaggers



Bus Stop



Location where road will be closed (only at Cahill / FHR)

Cahill Main Closed  
8:00 am to 12:00 pm

Local business access  
remains open

Flagging Operations at Caddis  
NO CLOSURE

Cahill Main

Caddis Bend

Cahill Main

Fish Hatchery Road

High Ridge Trail

High Ridge Trail