

## **FISH HATCHERY ROAD CONSTRUCTION UPDATE**

Forward this email to family, friends and co-workers who travel this area and encourage them to [sign up](#) for Project email updates! *STAY INFORMED*: Fish Hatchery Road [Project website](#) and connect through [Facebook](#), [Twitter](#) and [YouTube](#).

### **Weekly Construction Update: October 13 – October 22**

Access is open to area businesses and neighborhoods in the project area. Please continue to patronize our local businesses

**Overall Project Summary:** Reconstruct FHR from Traceway Drive south to Brendan Avenue

- ~~Stage Pre-E (Temporary Accommodations): Through April 12<sup>th</sup>~~
- ~~Stage E (Reconstruct NB lanes, Traffic pushed west & occupy existing SB lanes): April 13<sup>th</sup> – June 28<sup>th</sup>~~
- **Stage F (Reconstruct SB lanes, Traffic moved east & onto new NB lanes): June 28<sup>th</sup> – End of October**
- Stage G (Medians, Daily closures with traffic split & using permanent lanes): End of October – 11/12/21

### **Traffic Alerts:**

- Current Conditions:
  - Stage F: FHR traffic on new NB lanes, SB being reconstructed
  - Stage F1 (@ McKee & Caddis): Traffic shifted onto south half while north half is reconstructed
- Upcoming Impacts:
  - **Anticipate temporarily closing side streets on Thu-Friday 10/21-10/22 to pave HMA surface at High Ridge, Caddis, and Cahill Main late next week**
    - **See graphic on next page for more information**
  - Stage G traffic switch anticipated for Mon, 10/25
  - TBD: Anticipate shutting down Greenway Cross & Bryant Roundabout starting Monday 11/01 Closure will be 9 am – 3 pm.

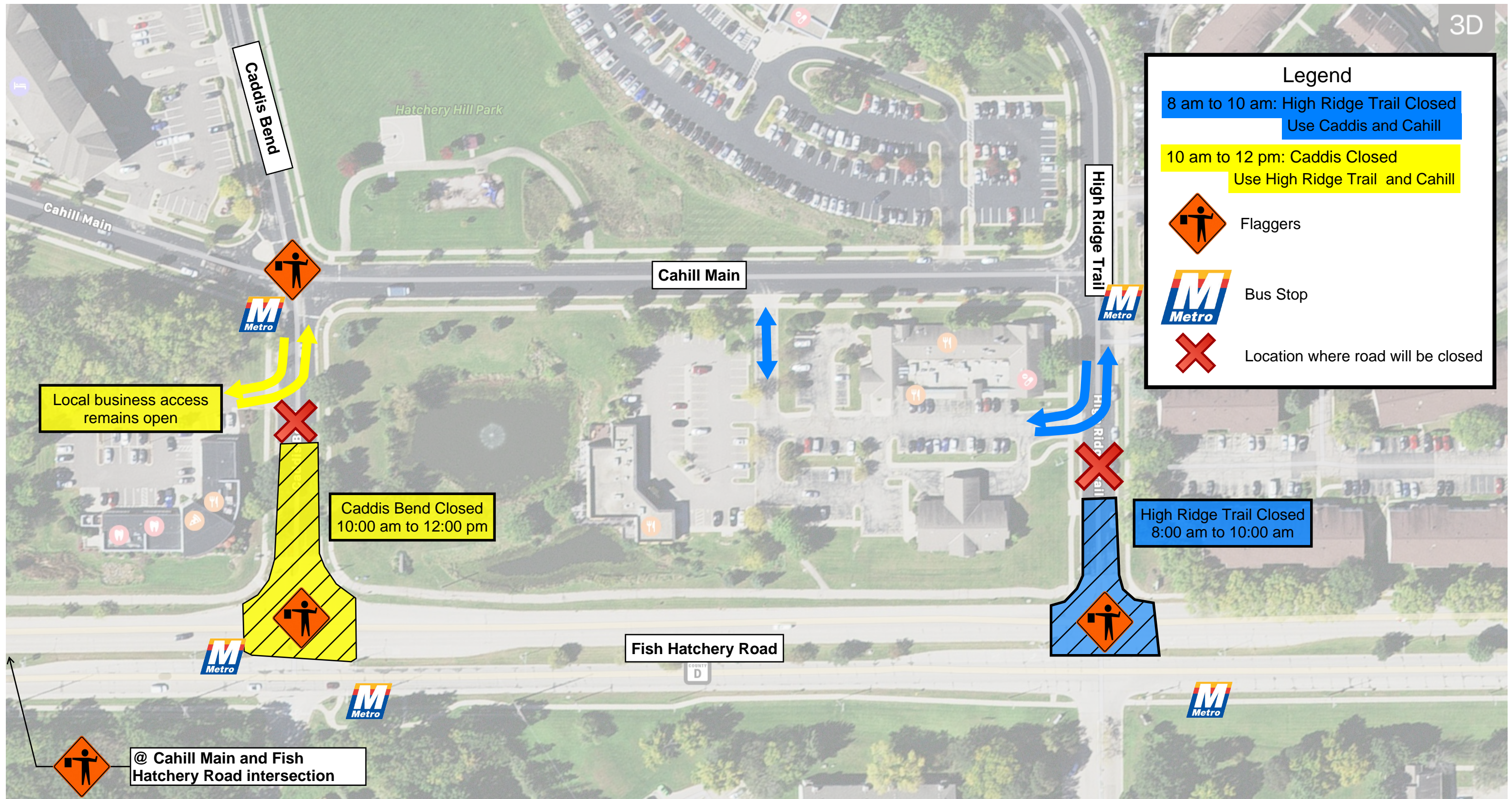
### **Plan Ahead: Three-week construction outlook**

- Week of 10/11
  - Binder FHR Mainline & Bike Path
  - Install SB streetlights, and signal poles at Caddis & McKee
  - Stain R355 & touch up paint ped bridge
  - Pines apartment sign/grading
- Week of 10/18
  - Pull electrical wire
  - Restore outside/west side of SB
  - Pave surface HMA (second half of week)
  - Permanent Pavement Marking (SB outside half of crosswalks & stop bar), Side Streets, bonus is SB longline (Friday or week of 10/25)
  - R-13-355 & Ped Path Rail
- Week of 10/25
  - Traffic Switch to Stage G
  - Stage G – traffic use permanent outside lanes while contractors finish remaining median work (removals, concrete, streetscaping)
- Week of 11/1
  - Close GWC and complete roundabout work
  - Finish Stage G median work
  - Potential switch traffic to median and wrap up remaining outside work

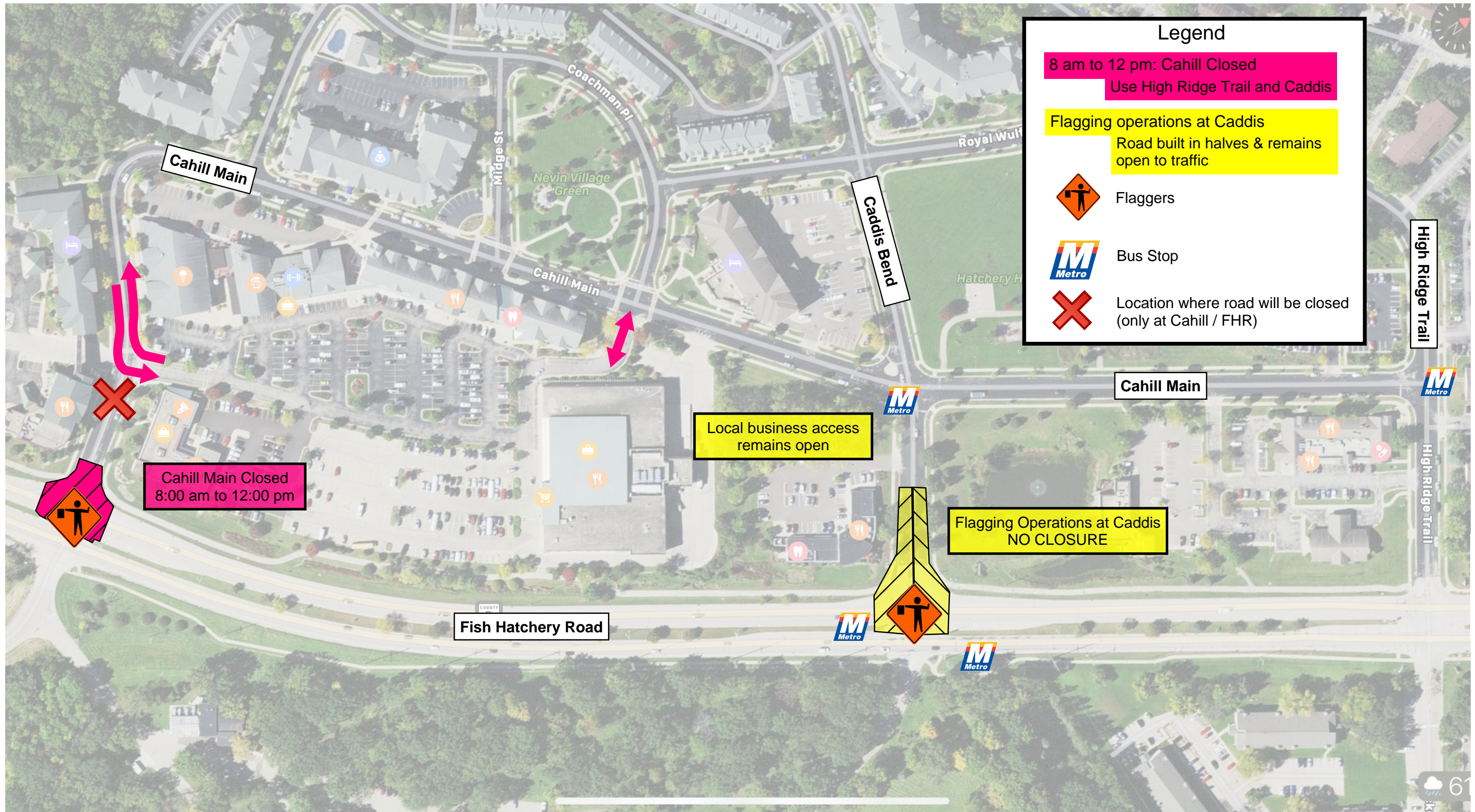
The project field office is located at [2948 North Fish Hatchery Road, Fitchburg, WI](#). If you plan to stop onsite, please call ahead of time (608) 347-1355 so we can ensure someone is available to meet.



# Thursday, October 21



# Friday, October 22



## Legend

8 am to 12 pm: Cahill Closed  
Use High Ridge Trail and Caddis

Flagging operations at Caddis  
Road built in halves & remains open to traffic



Flaggers



Bus Stop



Location where road will be closed  
(only at Cahill / FHR)

Cahill Main Closed  
8:00 am to 12:00 pm

Local business access  
remains open

Flagging Operations at Caddis  
NO CLOSURE

Fish Hatchery Road

Cahill Main

Caddis Bend

Cahill Main

High Ridge Trail

High Ridge Trail