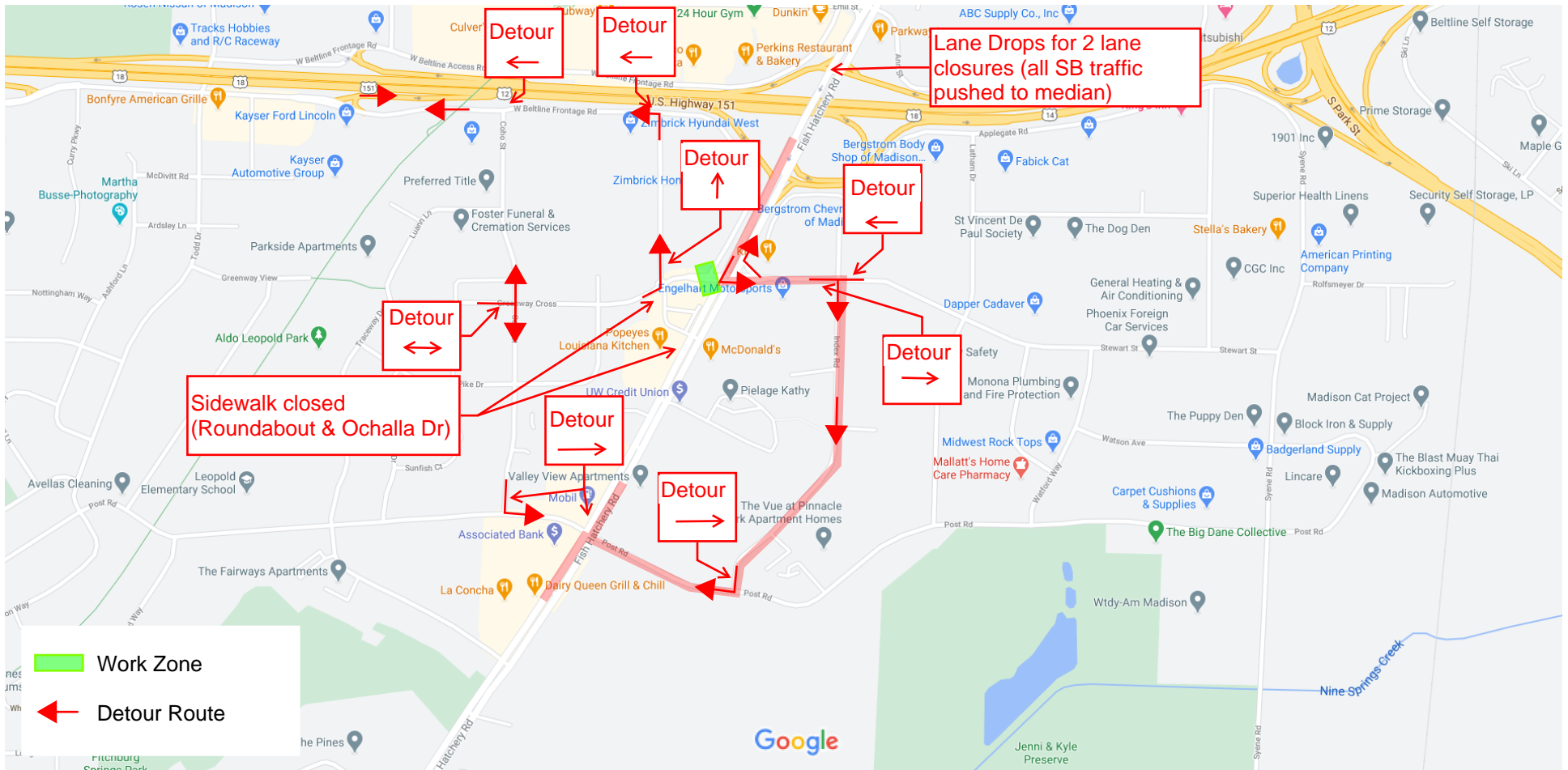


# FHR SB Closure Overview & Detour



**THURSDAY (3/11) 8 p.m. to 11 P.m.**

**To install permanent traffic signals:**

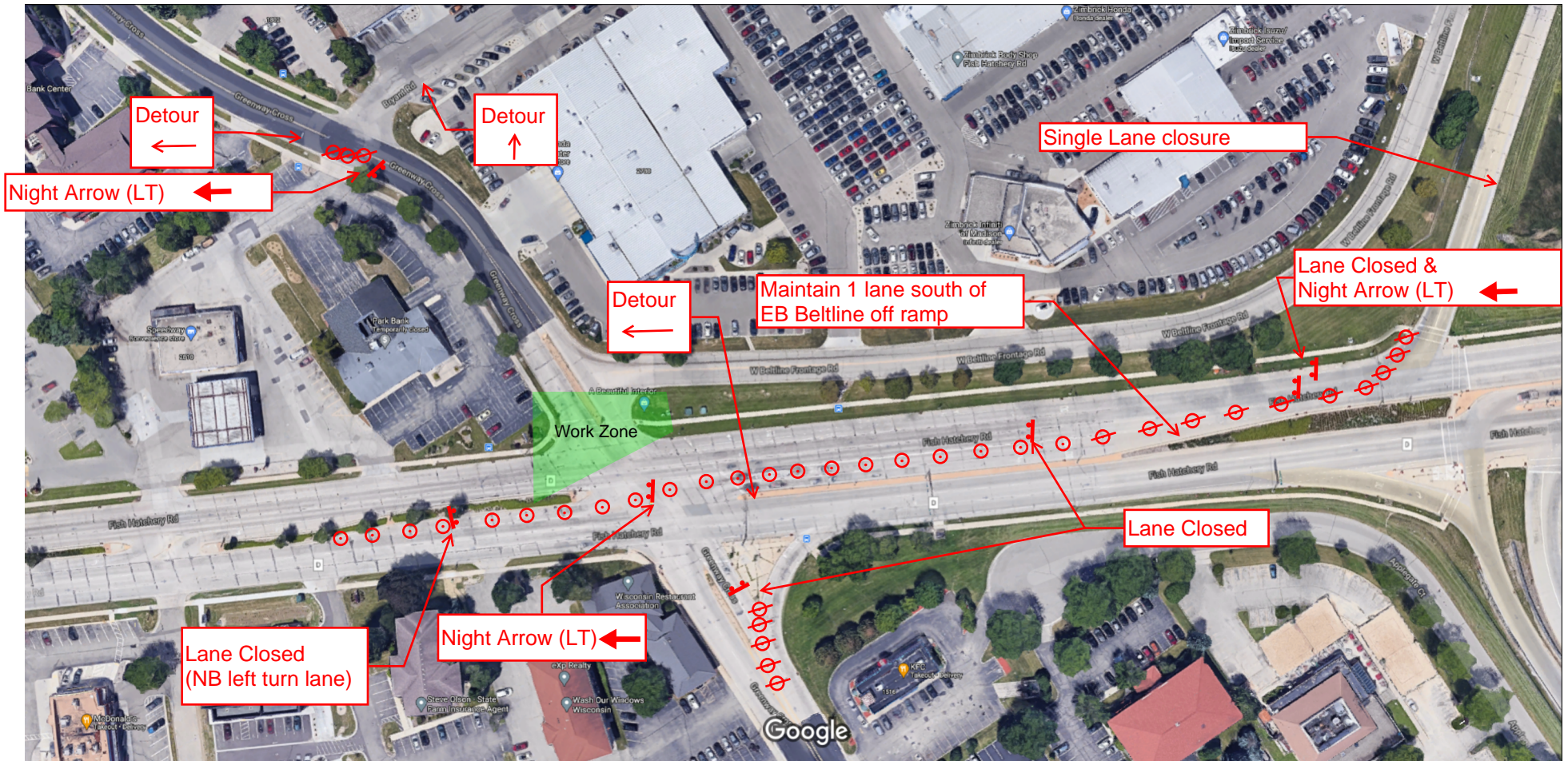
Southbound Fish Hatchery Road will be closed at south side of Greenway Cross Intersection. Greenway Cross west of Fish Hatchery Road also will be closed.

Fish Hatchery traffic north of the Beltline heading south will be detoured east at Greenway, then take a right on Index, and right onto Post.

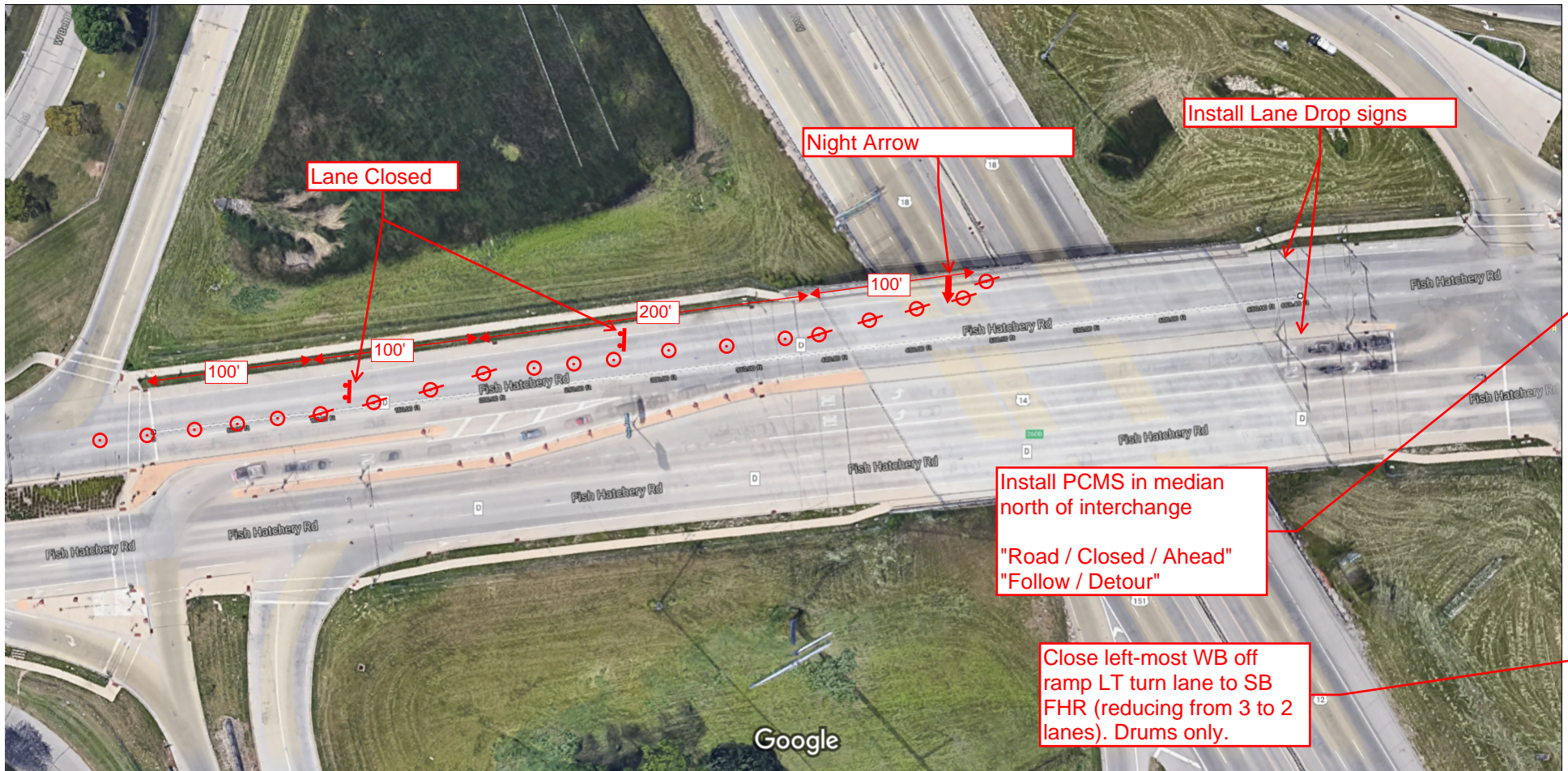
Traffic west of Fish Hatchery will use the Todd Drive ramps to access the Beltline and Coho to access Fish Hatchery.

Access to Beltline for NB traffic will remain available.

### SB - Greenway Cross Detail



### SB - Beltline Detail



Measure distance  
Total distance: 669.48 ft (204.06 m)

# NORTH FISH HATCHERY ROAD - NORTHBOUND DETOUR



**THURSDAY (3/11) 11 p.m. to 5 a.m.**

**To install permanent traffic signals:**

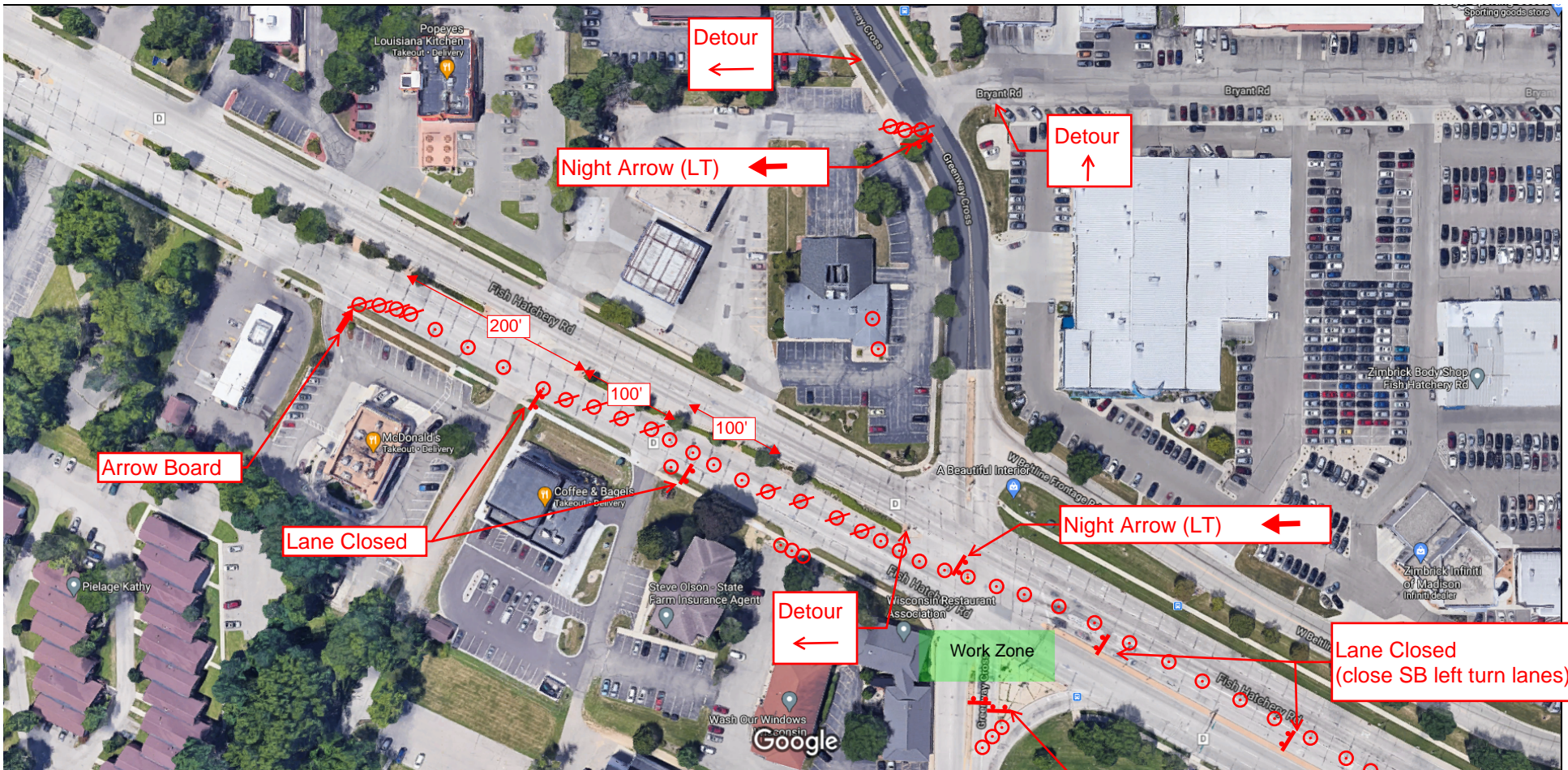
Northbound Fish Hatchery Road will be closed on north side of Greenway Cross Intersection. Eastbound Greenway Cross east of Fish Hatchery Road also will be closed.

To access the Beltline ramps, traffic south of Post Road heading north will be detoured and take a right at Post, then a left at Index, and left onto Greenway.

Access to businesses between Post and Greenway is still available. Traffic north of Post, will be detoured west on Greenway toward Bryant Road roundabout.

Traffic west of Fish Hatchery will access the beltline at Todd Drive ramps.

### NB - Greenway Cross Detail



Lane Closed & Night Arrow (RT) →

### NB - Post Road Detail

