

# CTH MM & McCoy Road Intersection Improvements



January 28, 2021



# Project Team

- Bill Balke
  - Fitchburg Director of Public Works, City Engineer
- Andrew McFadden
  - Fitchburg Senior Transportation Engineer
- Travis Buros
  - WisDOT Local Program Project Manager
- Samantha Herheim
  - KL Engineering, Inc, Consultant Project Manager
- Kevin Wehner
  - KL Engineering, Inc, Consultant Traffic Engineer



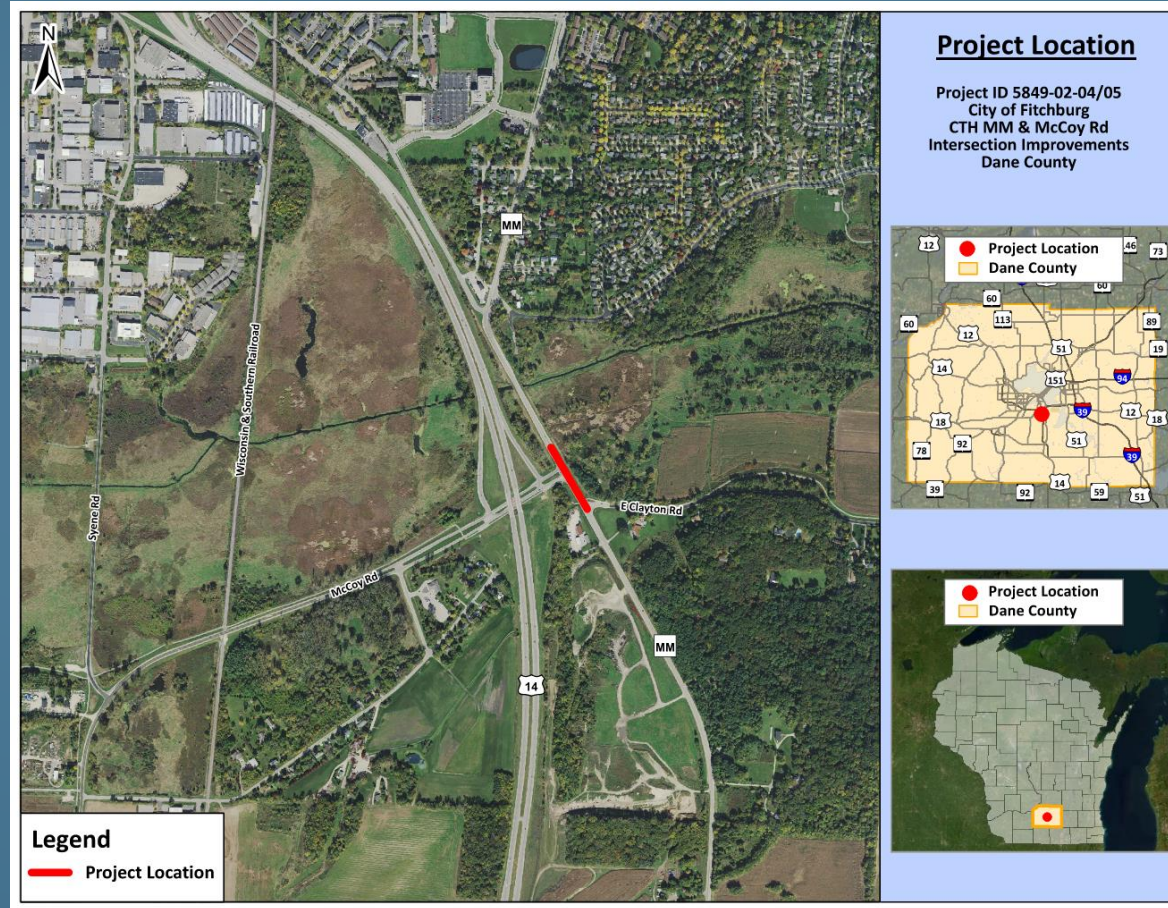
# Presentation Agenda

- Project Location
- Project Background & Existing Conditions
- Project Purpose and Need
- Proposed Improvements
- Real Estate
- Construction Staging
- Project Cost and Funding
- Adjacent Projects
- Project Schedule
- How to Get Involved
- Contact Information



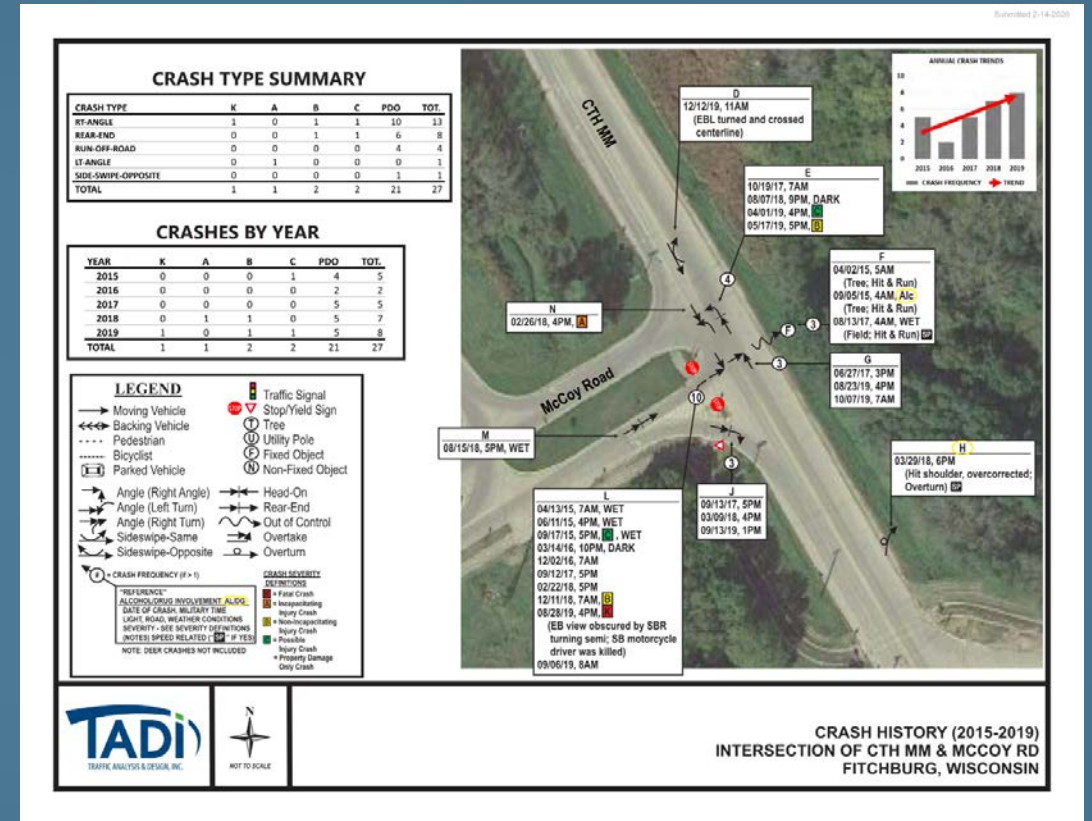
# Project Location

## County Highway MM & McCoy Road



# Project Background

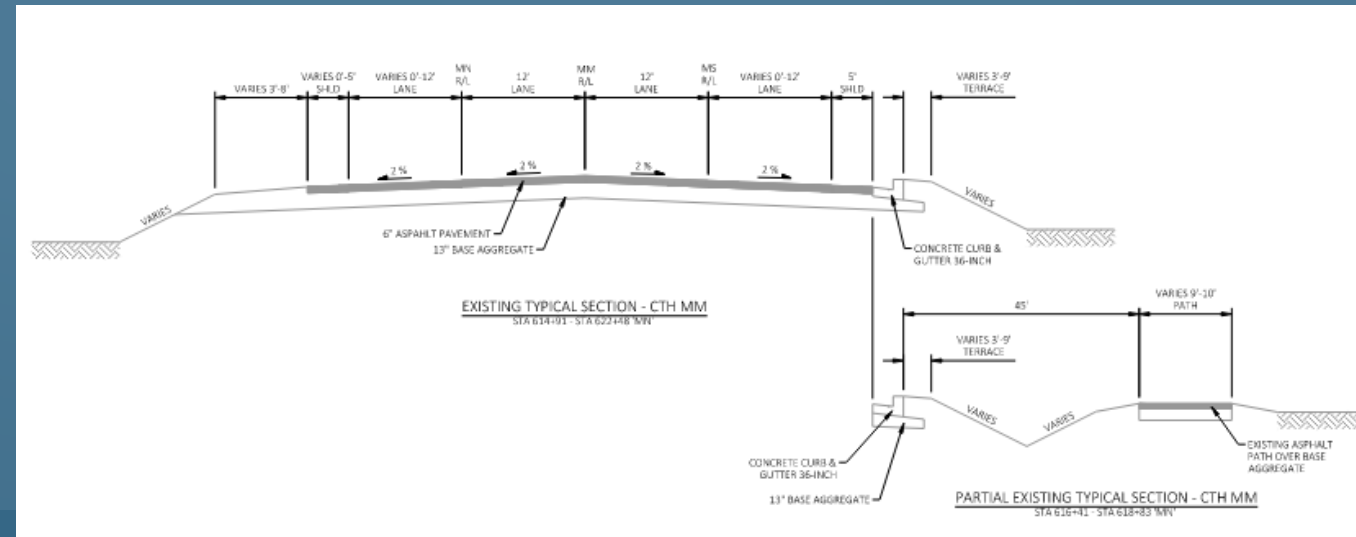
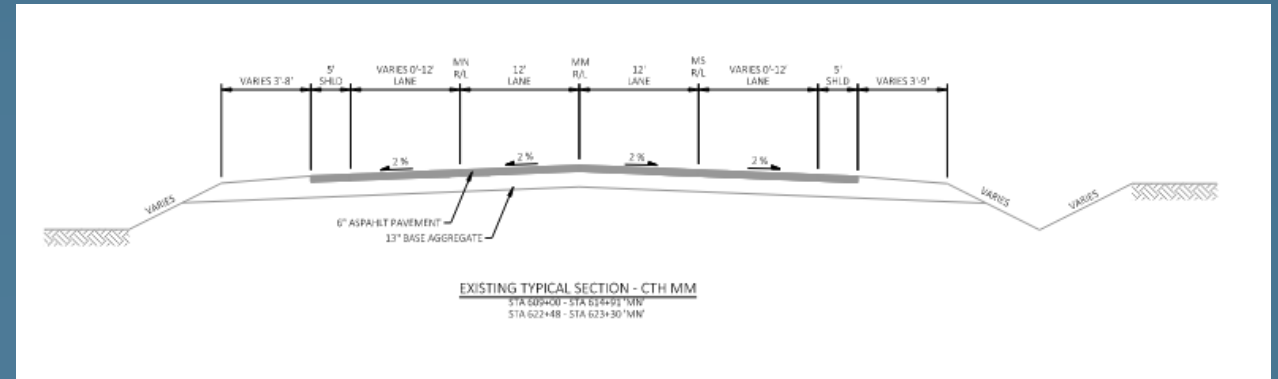
- Crash history
- Applied for and received Highway Safety Improvement Program (HSIP) funds



# Existing Conditions

## CTH MM

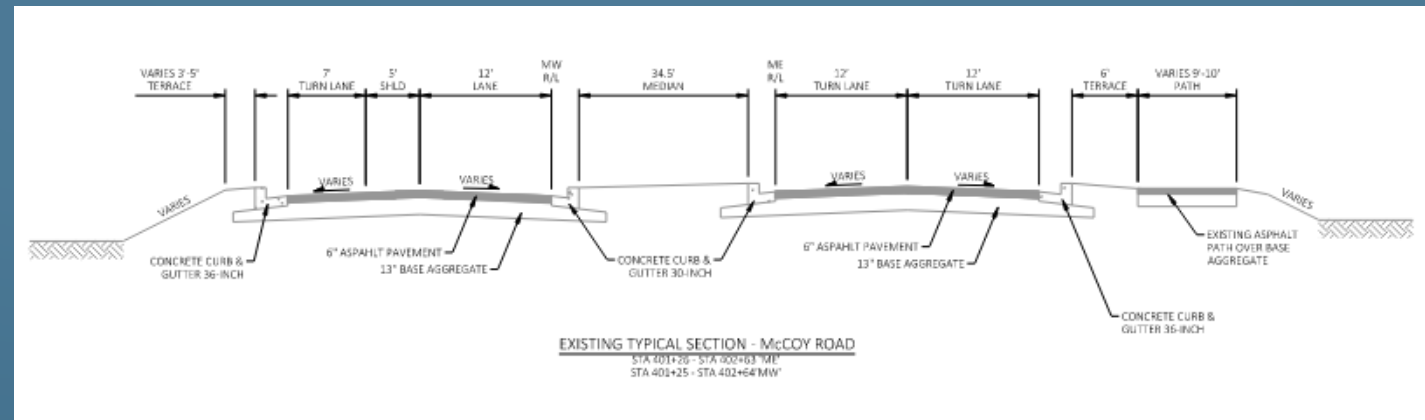
- Traffic Volume
  - 10,100 AADT (2018)
- Typical Section



# Existing Conditions

## McCoy Road

- Traffic Volume
  - 6,800 AADT (2018)
- Typical Section



# Existing Conditions

## Capital City Trail

- Crossing CTH MM at Clayton Road
  - Uncontrolled intersection



# Project Purpose & Need

- Why do we need this project?
  - Crash frequency and severity
  - Delay for eastbound traffic
  - Shared use path crossing safety



# Project Purpose & Need

- Improve intersection safety
- Improve intersection operations



# Proposed Improvements

- Install Traffic Signal
- Reallocate the CTH MM 4 through lanes at the intersection to 2 through lanes and designated turn lanes
- Dedicated northbound to westbound left turn phase (arrow)
- Intersection lighting

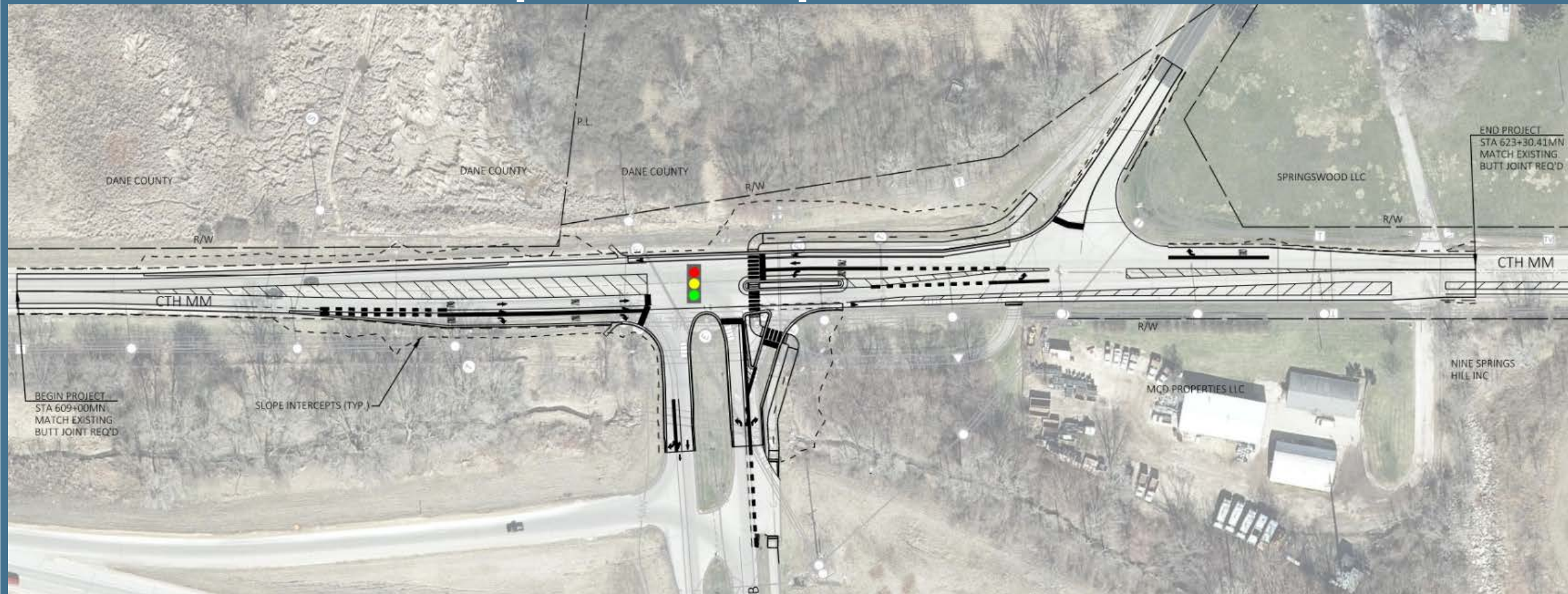


# Proposed Improvements

- Relocate the Capital City Trail crossing to signalized intersection
- Pedestrian signals with countdown timers
- Highly visible crosswalk markings
- Conversion of climbing lane to buffered bike lane



# Proposed Improvements



# Proposed Improvements

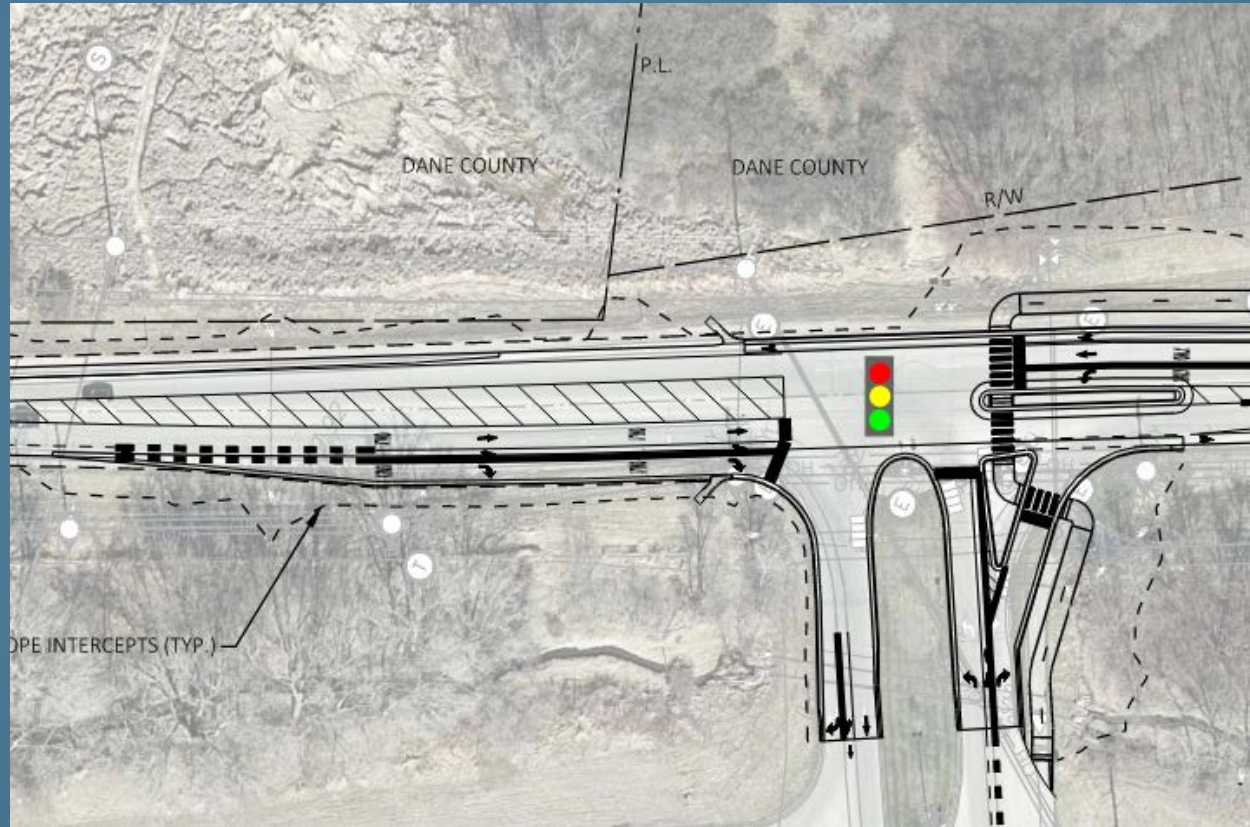
- Alternative evaluation for Capital City Trail crossing

- Designs with and without McCoy Road right-turn separator (pork scop) island considered
- Without right turn separator island:
  - Path crossing and McCoy Road right turn occur at the same time
  - Safety of path users depends on yielding by McCoy Road right turns
- With right turn separator island (preferred):
  - Traffic stopped with red light when in conflict with path crossing
  - Conflict between path users and McCoy Road right turns mitigated



# Real Estate

- Temporary Limited Easement



# Construction Staging

- 2022 Construction
- 1 lane in each direction will be maintained on CTH MM
  - All way stop being evaluated
  - Some work will be done under flagging conditions
- May be short term closures
- Capital City Path will remain open



# Project Cost & Funding

- Design

- \$111,795 for consultant and WisDOT review
- 100% Fitchburg

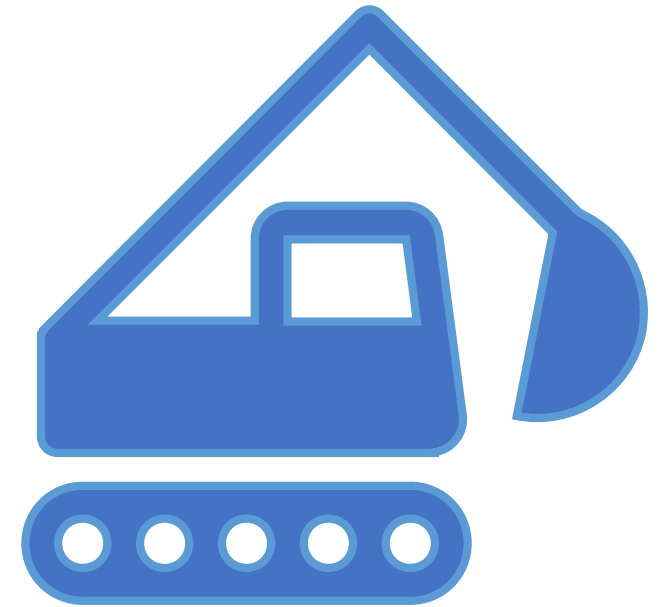
- Construction

- \$1,009,000 estimated for construction and oversight
- Funding from the WisDOT Highway Safety Improvement Program
- \$774,065 (max) Federal Funds at 90% of participating costs
- \$234,935 Fitchburg



# Adjacent Projects

- US 14 work
  - 2020 & 2021
  - Temporary signals will be installed at CTH MM & McCoy Road
- Fitchburg water main
  - Spring 2021
- Fitchburg sanitary sewer
  - 2022 construction coordinated with this project



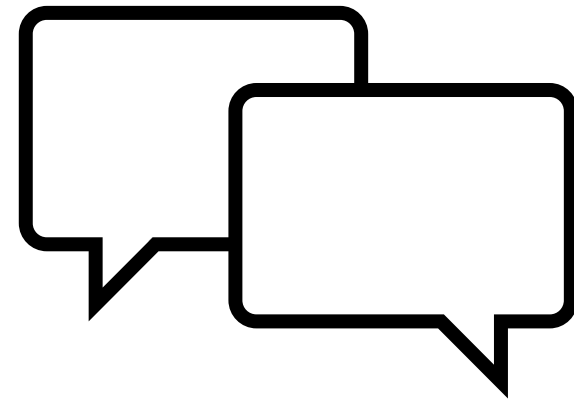
# Project Schedule

- Public Involvement Meeting January 2021
- Environmental Document February 2021
- Temporary Limited Easement March 2021
- Draft Final Plans March 2021
- Final Plans May 1, 2021
- Advertisement & Bidding September 14, 2021
- Construction 2022



# How You Can Get Involved

- View the presentation and exhibits
- Complete the comment form
- Reach out to the design team
- Please provide comments by 2/11/2021



# Thank You For Your Time

Please contact either of the following for more information

Andrew McFadden

City of Fitchburg

[Andrew.McFadden@fitchburgwi.gov](mailto:Andrew.McFadden@fitchburgwi.gov)

(608) 270-4261

Samantha Herheim

KL Engineering, Inc.

[sherheim@klengineering.com](mailto:sherheim@klengineering.com)

(608) 663-1218



Any  
Questions

