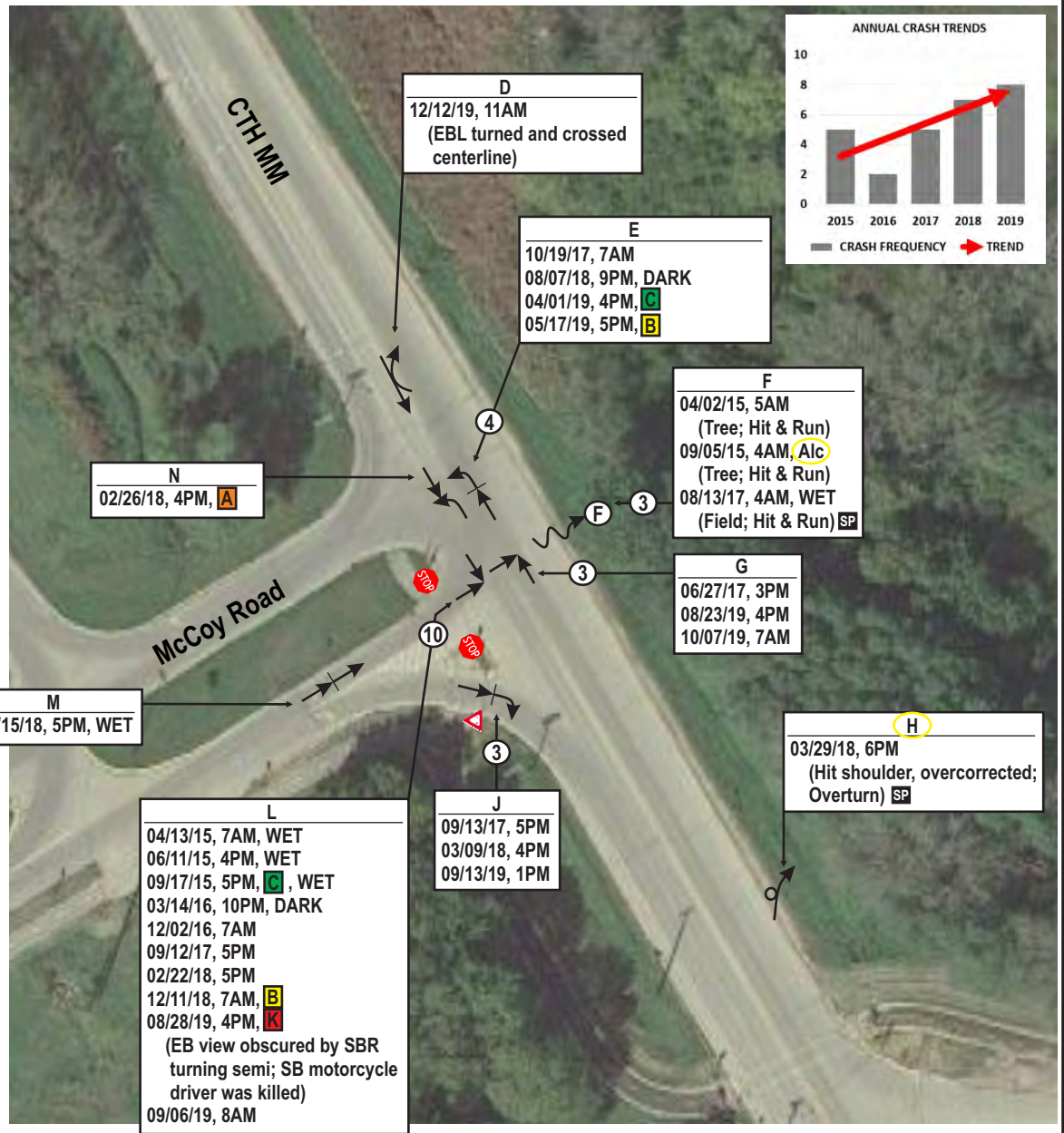
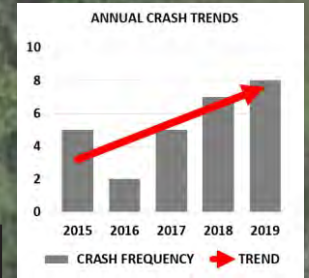


CRASH TYPE SUMMARY

CRASH TYPE	K	A	B	C	PDO	TOT.
RT-ANGLE	1	0	1	1	10	13
REAR-END	0	0	1	1	6	8
RUN-OFF-ROAD	0	0	0	0	4	4
LT-ANGLE	0	1	0	0	0	1
SIDE-SWIPE-OPPOSITE	0	0	0	0	1	1
TOTAL	1	1	2	2	21	27

CRASHES BY YEAR

YEAR	K	A	B	C	PDO	TOT.
2015	0	0	0	1	4	5
2016	0	0	0	0	2	2
2017	0	0	0	0	5	5
2018	0	1	1	0	5	7
2019	1	0	1	1	5	8
TOTAL	1	1	2	2	21	27



LEGEND

- Moving Vehicle
- ↔ Backing Vehicle
- Pedestrian
- ⋯ Bicyclist
- 🚗 Parked Vehicle
- 🚦 Traffic Signal
- 🛑 Stop/Yield Sign
- 🌳 Tree
- 📍 Utility Pole
- 📦 Fixed Object
- 📍 Non-Fixed Object
- ↔ Angle (Right Angle)
- ↔ Angle (Left Turn)
- ↔ Angle (Right Turn)
- ↔ Sideswipe-Same
- ↔ Sideswipe-Opposite
- ↔ Head-On
- ↔ Rear-End
- ↔ Out of Control
- ↔ Overtake
- ↔ Overturn

= CRASH FREQUENCY (if > 1)

"REFERENCE"
 ALCOHOL/DRUG INVOLVEMENT - AL/DG
 DATE OF CRASH, MILITARY TIME
 LIGHT, ROAD, WEATHER CONDITIONS
 SEVERITY - SEE SEVERITY DEFINITIONS
 (NOTES) SPEED RELATED ("SP" IF YES)

NOTE: DEER CRASHES NOT INCLUDED

- CRASH SEVERITY DEFINITIONS**
- K = Fatal Crash
 - A = Incapacitating Injury Crash
 - B = Non-Incapacitating Injury Crash
 - C = Possible Injury Crash
 - P = Property Damage Only Crash



**CRASH HISTORY (2015-2019)
 INTERSECTION OF CTH MM & MCCOY RD
 FITCHBURG, WISCONSIN**