

# Verona Road (US 18/151) Project



*Improving safety, mobility and efficiency*

Steven Theisen  
Project Communications Manager

Mark Vesperman, P.E.  
Design Project Manager

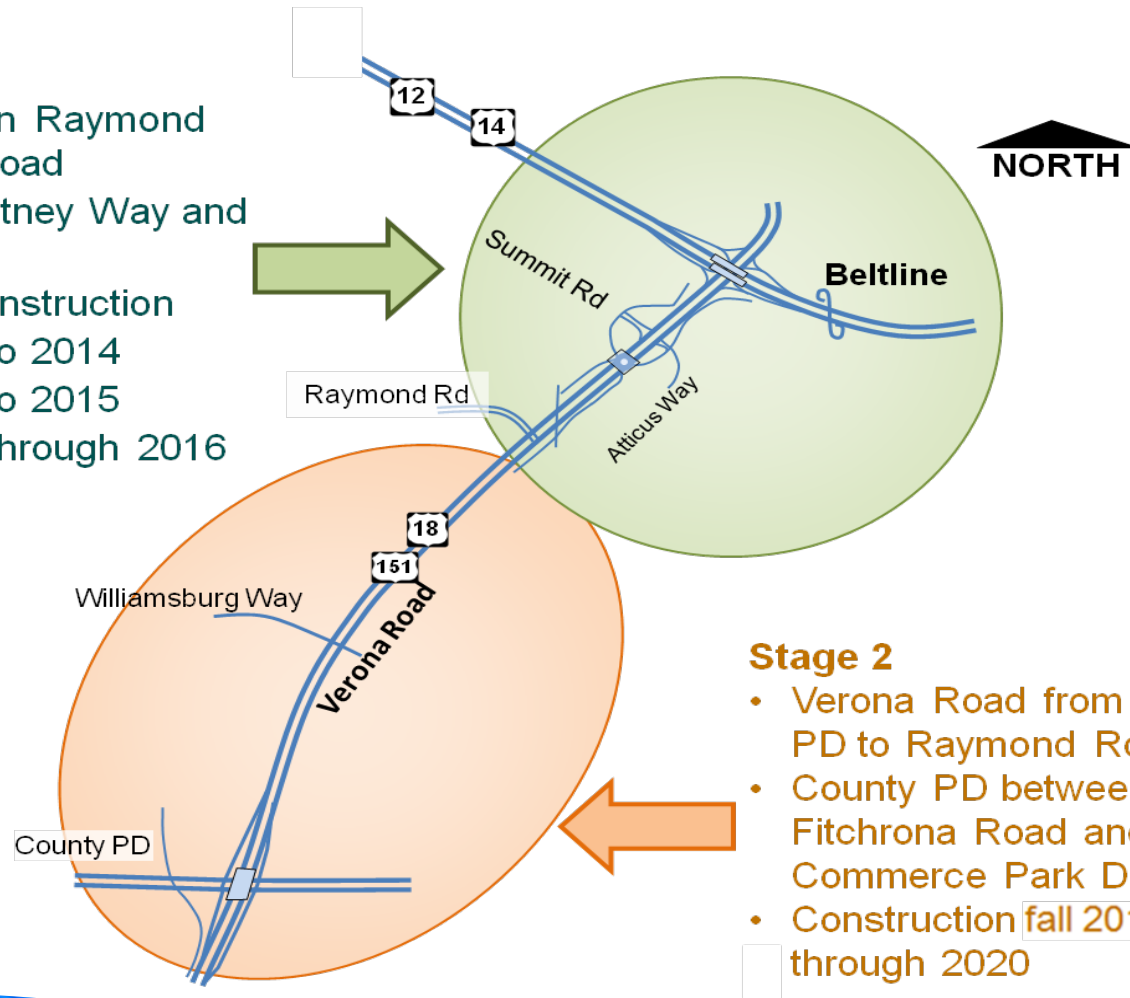


# Project Overview



## Stage 1

- Verona Road between Raymond Road and Nakoma Road
- Beltline between Whitney Way and Seminole Highway
- Several phases of construction
  - Phase 1, 2013 to 2014
  - Phase 2, 2014 to 2015
  - Phase 3, 2015 through 2016



## Stage 2

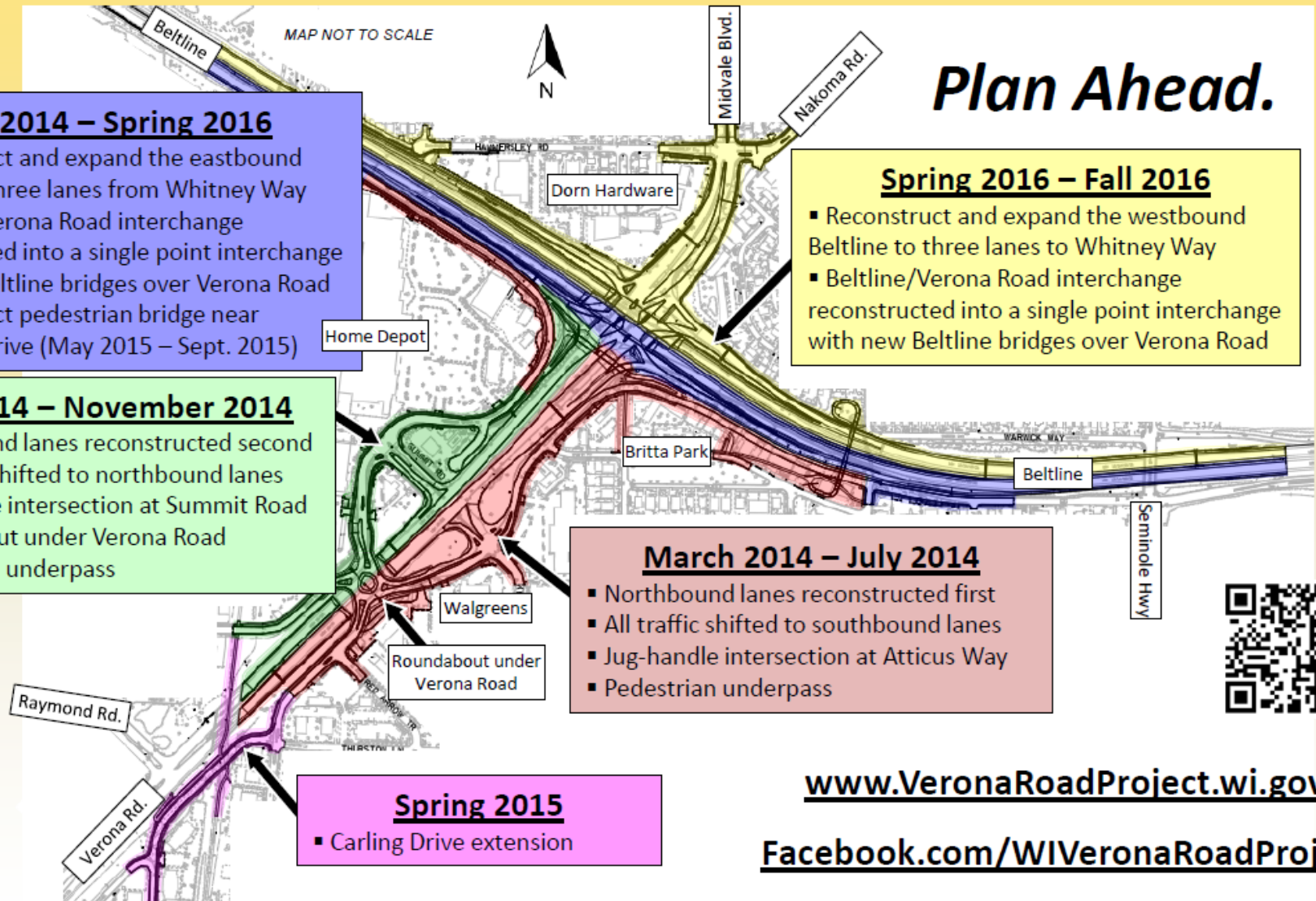
- Verona Road from County PD to Raymond Road
- County PD between Fitchrona Road and Commerce Park Drive
- Construction fall 2016 through 2020



# Stage 1 Construction Events

Beltline: Whitney Way to Seminole Highway

Verona Road: Raymond Road to Nakoma Road



## Plan Ahead.



[www.VeronaRoadProject.wi.gov](http://www.VeronaRoadProject.wi.gov)

[Facebook.com/WIVeronaRoadProject](https://www.facebook.com/WIVeronaRoadProject)

# Work completed to date



October 2012



June 2015



# Beltline work underway



- Westbound Beltline expansion, Seminole Highway to Whitney Way, anticipated to start in mid-March 2016.

- Midvale Boulevard reconstruction, from the Beltline to Nakoma Road/Hammersley Road intersection also starts this spring.



# Up next...Stage 2



Nesbitt Road

Anton Drive

Fitchrona Road



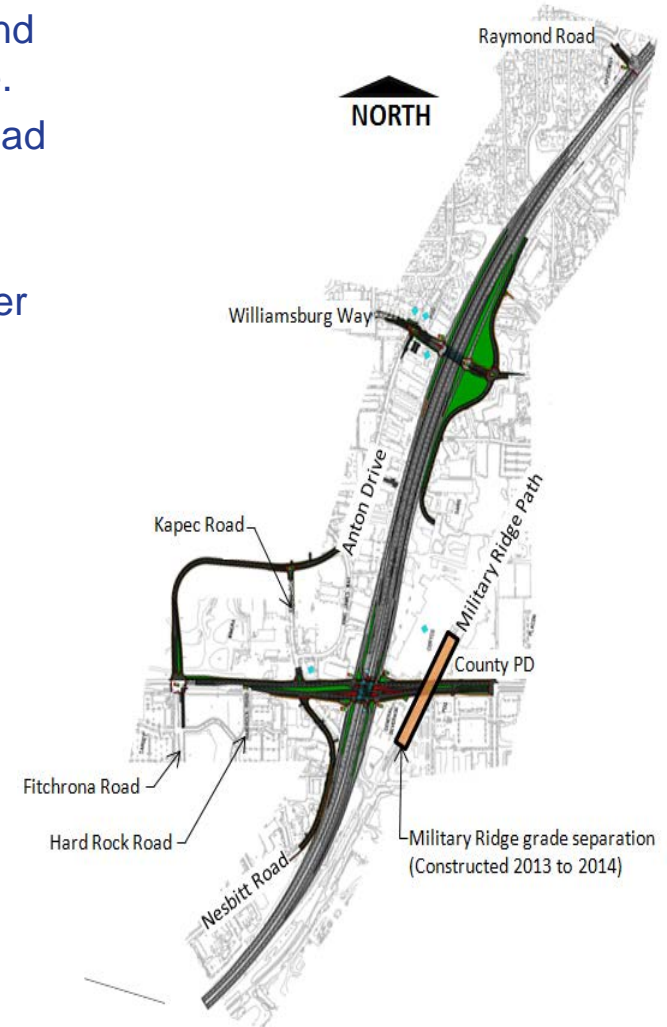
McKee Road



# Stage 2 improvements



- Three lanes in each direction on Verona Road from Raymond Road to south of the County PD (McKee Road) interchange.
- County PD expansion to three lanes, between Fitchrona Road and Commerce Park Drive.
- Two interchanges: Williamsburg Way and County PD
- Verona Road traffic travels under Williamsburg Way and over County PD.
- Raymond Road remains a signalized intersection.
- Williamsburg Way and Anton Drive intersection will be constructed into a single lane roundabout.
- Fitchrona Road extension will connect to Anton Drive.
- Only left turns and right turns permitted from County PD to Nesbitt Road/Kapec Road.
  - No left turns or crossing movements will be allowed from Nesbitt Road/Kapec Road.
- Construction is anticipated from fall 2016 through 2020.



# Stage 2 Construction Events

Verona Road (US 18/151): Fitchrona Road to Raymond Road  
Local roads: County PD (McKee Road), East Frontage Road, Fitchrona Road, Nesbitt Road, Williamsburg Way



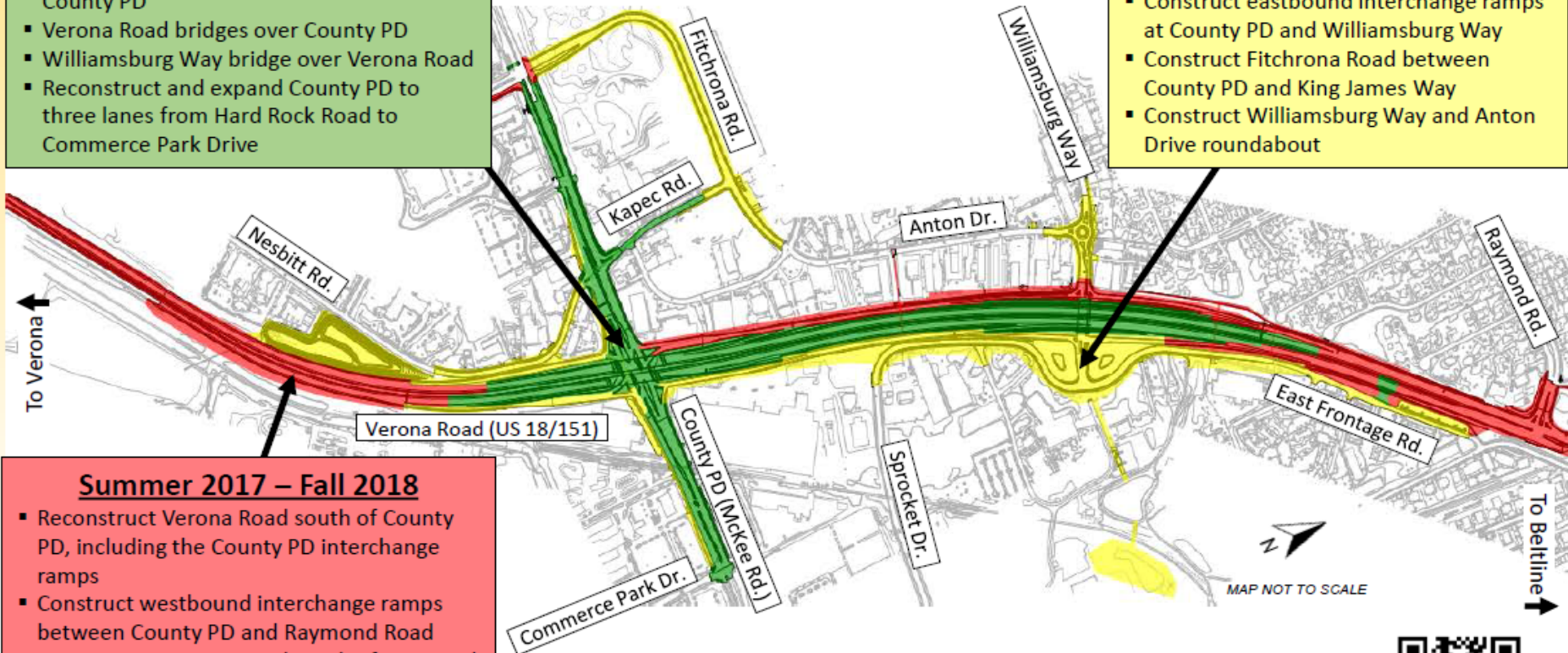
## Spring 2019 – Fall 2020

- Reconstruct and expand Verona Road to three lanes between Raymond Road and County PD
- Verona Road bridges over County PD
- Williamsburg Way bridge over Verona Road
- Reconstruct and expand County PD to three lanes from Hard Rock Road to Commerce Park Drive

# Plan Ahead.

## Fall 2016 – Fall 2017

- Reconstruct Nesbitt Road and the East Frontage Road
- Construct eastbound interchange ramps at County PD and Williamsburg Way
- Construct Fitchrona Road between County PD and King James Way
- Construct Williamsburg Way and Anton Drive roundabout



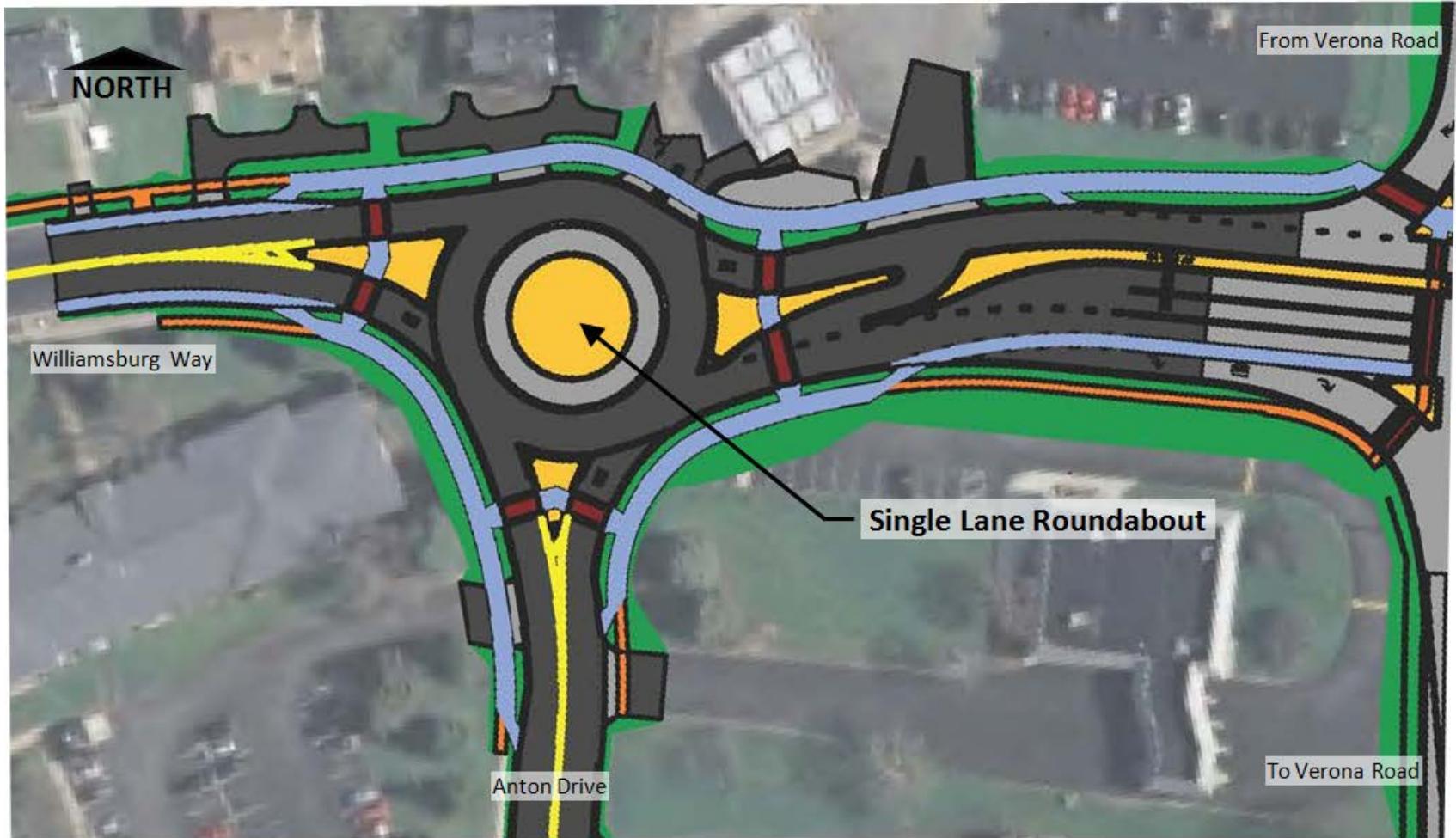
## Summer 2017 – Fall 2018

- Reconstruct Verona Road south of County PD, including the County PD interchange ramps
- Construct westbound interchange ramps between County PD and Raymond Road
- Reconstruct Verona Road south of Raymond Road

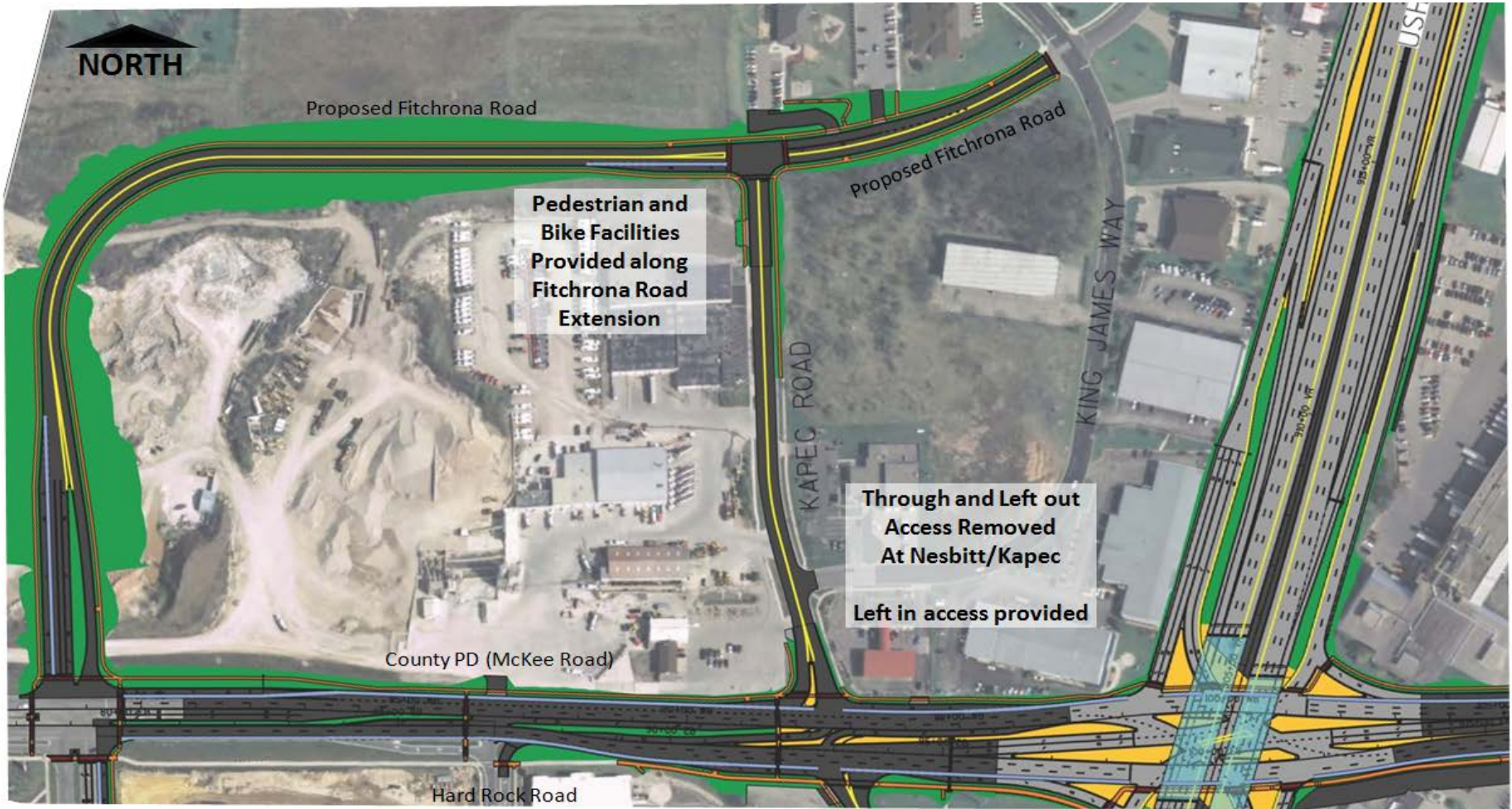
[www.VeronaRoadProject.wi.gov](http://www.VeronaRoadProject.wi.gov)  
[Facebook.com/WIVeronaRoadProject](https://www.facebook.com/WIVeronaRoadProject)



# Williamsburg Way/Anton Drive



# Fitchrona Road extension



# Stay informed and involved!



## Verona Road (US 18/151) Project

Fitchburg and Madison, Dane County

OVERVIEW

MAP

TRAVEL TIMES

CLOSURES

NEWS

EXHIBITS

RESOURCES


SIGN UP FOR UPDATES

CONTACTS

### Overview

Welcome to the official WisDOT website for the Verona Road (US 18/151) Project in Dane County.

Stay informed and involved with the project:

- [Sign up for project email updates!](#)
- [Learn about this year's construction work under Schedule!](#)
- [Project Facebook page!](#) 

Thank you for your patience during this major reconstruction project!

FULL OVERVIEW



WI Verona Road Project  
Government Organization

Timeline

About

Photos

Sign Up for Updates

More

2,820 people like this

Invite friends to like this Page

ABOUT

Welcome to the official Verona Road (US 18/151) Project Facebook page!

Stay up-to-date on the major Verona Road reconstruction project in Dane County.

<http://VeronaRoadProject.wi.gov/>

APPS



Sign Up for Updates

WI Verona Road Project

July 20 at 11:55am

Later this week, crews will install the steel arch structures for the new pedestrian bridge between Seminole Highway and Verona Road (US 18/151).

During the work on Wednesday night (July 22), the westbound and eastbound Detline, between Verona Road and Fish Hatchery Road, will be detoured from 10 p.m. to 5 a.m. A signed detour route will use Verona Road, County PD (McKee Road) and Fish Hatchery Road.

LEARN MORE — [http://bit.ly/BeltlineClosure\\_July22-23](http://bit.ly/BeltlineClosure_July22-23)

SHARE this post and map family, friends and co-workers who travel on the Detline.



Verona Road Business Coalition website  
[VeronaRoad.info](http://VeronaRoad.info)

# Contacts and resources



**John Vesperman, P.E.**

Project Chief

[john.vesperman@dot.wi.gov](mailto:john.vesperman@dot.wi.gov)

**Katrina Feltes, P.E.**

Project Supervisor

[katrina.feltes@dot.wi.gov](mailto:katrina.feltes@dot.wi.gov)

**Mark Vesperman, P.E.**

Design Project Manager

[mark.vesperman@dot.wi.gov](mailto:mark.vesperman@dot.wi.gov)

**Chris Fredrick, P.E.**

Construction Project Manager

[christopher.fredrick@dot.wi.gov](mailto:christopher.fredrick@dot.wi.gov)

**Steven Theisen**

Project Communications Manager

[steven.theisen@dot.wi.gov](mailto:steven.theisen@dot.wi.gov)

**Verona Road Project website**

[www.VeronaRoadProject.wi.gov](http://www.VeronaRoadProject.wi.gov)

**Follow us on Facebook**

[Facebook.com/WIVeronaRoadProject](https://www.facebook.com/WIVeronaRoadProject)



# Questions?

